



THE CARIBBEAN REGIONAL STRATEGIC PROGRAM FOR CLIMATE RESILIENCE

Presentation by

Dr. Ulric Trotz

Science Adviser

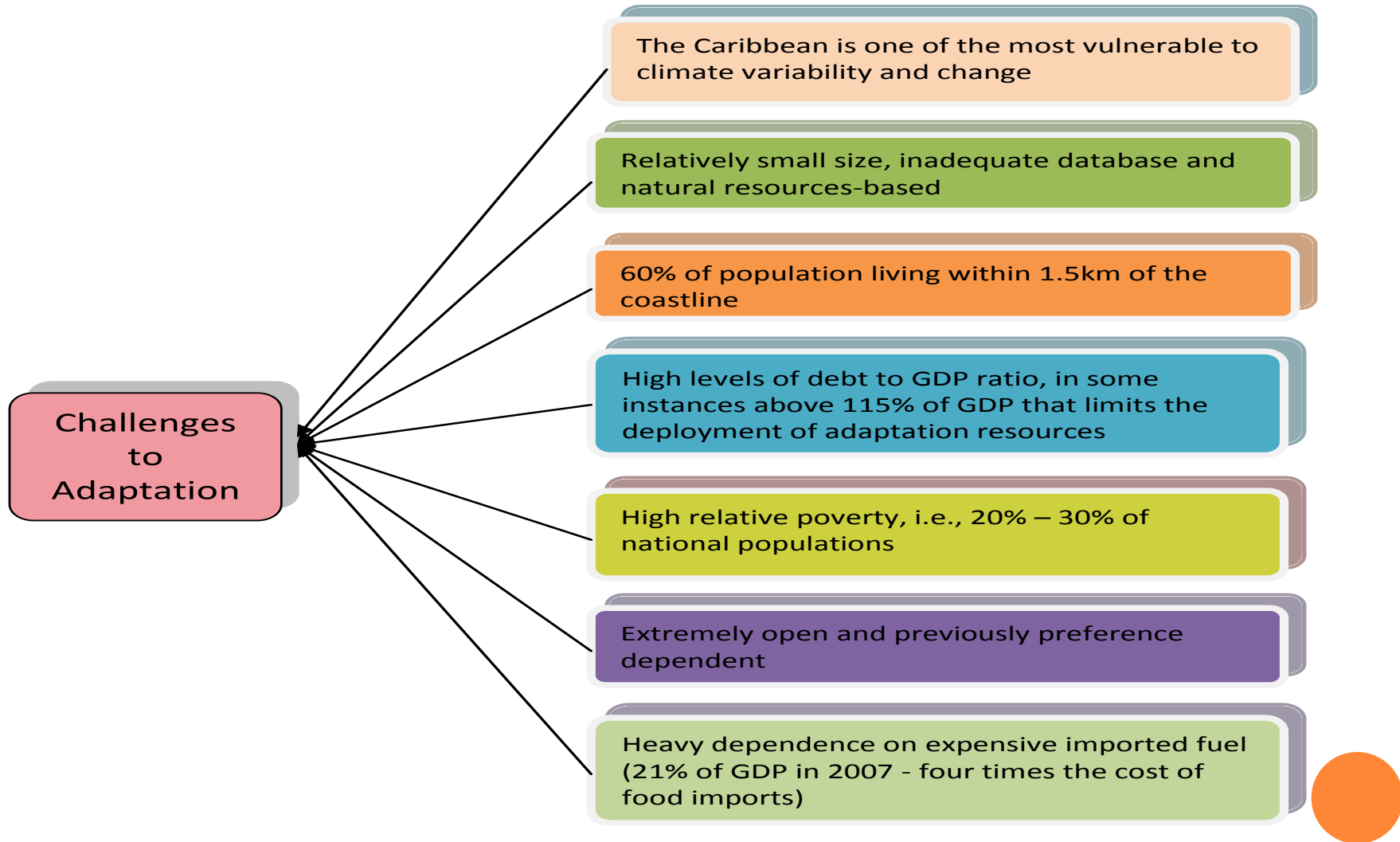
Caribbean Community Climate Change Centre

Occasion: PPCR Sub-Committee

Date: April 30, 2012

Place: Washington, DC

CONSIDERATIONS IN DEVELOPING THE SPCR



DEVELOPMENT OF THE SPCR– THE PROCESS

- Reviewed outputs from other adaptation initiatives in the Region
- Consultations with stakeholders
- Incorporating articulated priorities and SPCRs of Caribbean PPCR Pilot Countries.
- Conducted National and Regional PPCR Joint Missions
- Feedback from the Regional Steering Committee and Project Reviewer



COMPONENT 1: IMPROVING GEOPHYSICAL DATA AND MANAGEMENT FOR ADAPTATION PLANNING AND SEA LEVEL RISE AND STORM SURGE IMPACT ANALYSIS— LEAD AGENCY - CCCCC

○ Aim

- Improving the quality and level of climate relevant data for risk analysis and adaptation

○ Main Sub-component Activities

- Collection of topographic and bathymetric data, aerial imagery digital elevation models
- Data processing and analyses
- Training for data hosting, management and application
- Applied analysis, knowledge management and application



COMPONENT 2: CONSOLIDATING AND EXPANDING THE REGIONAL CLIMATE MONITORING NETWORK AND GLOBAL PLATFORM LINKAGES – LEAD AGENCY – CIMH

- Aim
 - Consolidate and expand the regional climate monitoring network connectivity and linkage with global networks
- Main Sub-Component Activities
 - Support for regional connectivity and data interpretation and use for the existing hydro-meteorological networks region wide
 - Consolidation of archiving and interpretation center and support for open connectivity to all countries and parties in the region
 - Consolidation and expansion of regional archiving center and back up site outside the region.
 - Consolidation of coastal topography & bathymetric data
 - Expansion of regional's linkage and connectivity to GCOS, GLOSS and GOOS.

COMPONENT 3: DOWNSCALING AND EXPANDING CLIMATE PROJECTION MODELS AND HIGH RESOLUTION MAPS— LEAD AGENCY - UWI

○ Aim

- Strengthen the regional climate modeling capacity and support adaptation planning.

○ Sub-Component Activities

- Fully utilize data already available as output from the PRECIS model to enhance regional climate modeling in the Caribbean;
- Increase the number of climate variables analyzed and the range of analyses performed including the examination of extreme events and hurricanes;
- Formulate a mechanism or strategy for incorporating Objective 1 and 2 results in sector models, especially for PPCR pilot country priority areas



COMPONENT 3: DOWNSCALING AND EXPANDING CLIMATE PROJECTION MODELS AND HIGH RESOLUTION MAPS: SUB-COMPONENTS

○ Tier One Modeling:

- Calculation and analysis of climate extremes and climate indices for Caribbean states and comparison with available outputs e.g. from global and regional models.
- Generation of climate change scenarios verified for the local conditions of the Caribbean and at a resolution useful for adaptation measures, including the design of infrastructure

○ Tier Two Modeling:

- Identify most appropriate methodology and tools to apply to the various sectors.
- Generation of strategies/framework to link Tier 1 and Tier 2 modeling and socioeconomic scenarios
- Generation of new outputs, building on the Tier 1 climate data driven outputs, to analyze sector impacts of climate change particularly in agriculture, forests, health, water and fisheries



COMPONENT 3: DOWNSCALING AND EXPANDING CLIMATE PROJECTION MODELS AND HIGH RESOLUTION MAPS: SUB-COMPONENTS

- Sharing of Information and Lessons learned
 - Knowledge Management which will include-
 - semi-annual meetings of the modeling team;
 - regular forums with second tier modelers,
 - climate change and climate variability practitioners and decision-makers
 - publication and dissemination of results using different media;
 - enhancement of existing interfaces and platforms for communicating with, and
 - sharing new information and outputs.
- Capacity Building
 - Training in climate modeling



COMPONENT 4: APPLIED ADAPTATION INITIATIVES – LEAD AGENCY - CCCCC

- Aim:
 - Enhance the region's climate resilience

- Objective
 - Enable the assessment, design, scaling-up and replication of practical adaptation measures, including cost benefit analyses.
 - Develop appropriate incentive regimes to encourage the implementation of adaptation measures by the private sector
 - Document and disseminate assessment results (including cost benefit analyses), good practices and lessons learned.



COMPONENT 4: APPLIED ADAPTATION INITIATIVES

- Sub-Component Activities
 - i. Scale up proven adaptation measures through the design and implementation of financial and regulatory instruments, including for rainwater harvesting, agriculture resilience practices.
 - ii. Assess and design adaptation measures with preliminary feasibility analysis on, inter-alia, Dengue surveillance system, water aggregation/augmentation, coastal fishing.
 - iii. Assess of policy and legislative framework and determination of enhancements to enable climate change adaptation
 - iv. Document and disseminate lessons learned
 - v. Design and deliver training modules on successful adaptation activities and approaches, including gender and vulnerable groups



SPCR COORDINATION

○ Approach

- Agencies are CIMH, CRFM, CARDI, CEHI, UWI
- Proposed approach is a memorandum of understanding with each of the lead agencies that will include activities and milestones in keeping with the logical framework.
- Institutional assessment will be undertaken in the first instance, and will inform the conditions of the MOU and any preparatory actions that must be taken

○ Objectives

- Support to capacity building within regional and national organizations, especially in areas of policy articulation and advocacy of adaptation and climate resilience issues;
- Sharing lessons learned from PPCR pilot activities with non-PPCR pilot countries across the region;
- Raising public awareness on the PPCR and on climate resilience and adaptation

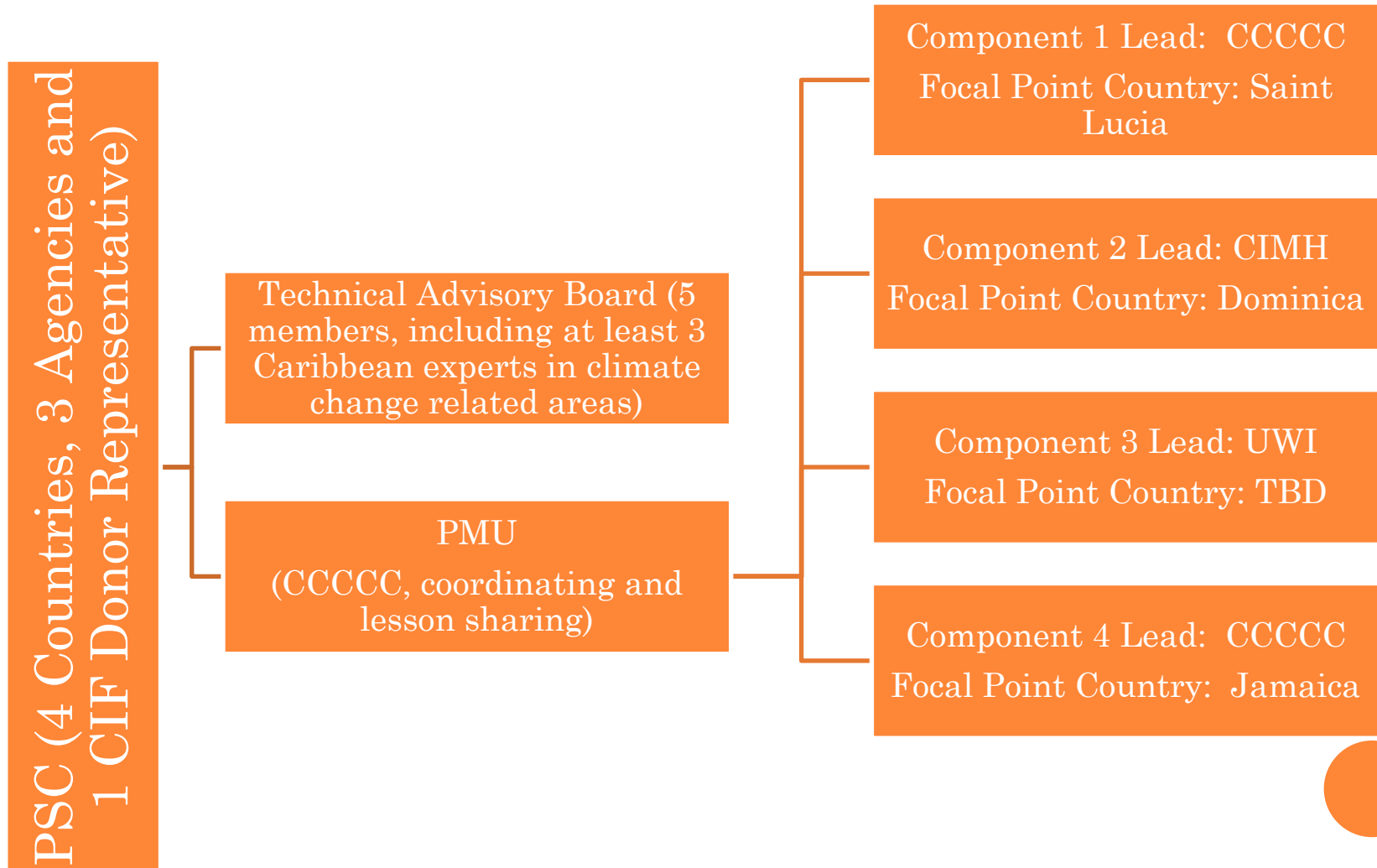


KEY COORDINATION ACTIVITIES-

- Annual Meetings of PPCR Regional Track and National Track Focal Points/Coordinators
- Semi-Annual Reporting
- Coordinating and harnessing of outputs from the documented issues and lessons learned under each of the four SPCR components;
- Coordinating the design and implementation of training modules in joint or independent training workshops and/or seminars;
- Coordinating the development and dissemination of PPCR lessons learned using various communication medium, such as video and publications.
- Liaise with website managers, including at the CCCCC and the UWI, to agree on and facilitate the dissemination of prepared information to raise awareness of the PPCR and of climate resilience, and to support capacity building.



THE SPCR IMPLEMENTATION STRUCTURE AND THE THREE-ONE PRINCIPLE



SPCR AND REGIONAL INITIATIVES: THREE – ONES IN ACTION

- Three Ones Principle-
 - One Plan
 - One Coordinating Mechanism
 - One Monitoring and Evaluation Framework
- Regional Framework and IP
 - GCCA Program, includes investment in hydromet and coral reef monitoring stations
 - DFID/CCCCC/CDB – Enhanced Regional Resilience
 - CDKN/5Cs – Develop Risk Management Process
- Other initiatives, include
 - Regional Public Goods: The Document Management System, which builds on CIMH coordinated initiatives
 - Carbon Neutral Project: Aims in part at addressing carbon emissions in the tourism sector



KEY RESULTS

- Improved regional institutional capacity to respond to climate variability and climate change.
 - At least 3 updated maps
 - Expanded linkage to GLOSS and GOOS
 - At least 12 new resource persons, of which at least 4 are female
 - At least 2 financing mechanisms established
 - At least 1 national plan and 4 sector plans climate proofed
 - At least 2 sets of measures for vulnerable and/or indigenous groups included in each sector plan
 - At least 2 lifeline assets—bridges, hospitals, power supply facility—climate proofed
- Scaled-up and/or replicated initiatives for climate resilience.
 - At least 2 expanded or replicated adaptation initiatives
- Dissemination of PPCR learning to non-PPCR countries.
 - At least 5 non-PPCR countries participating in PPCR information sharing and/or training initiatives



LINKAGES, MONITORING AND EVALUATION

- The linkages between the national and regional tracks as reflected in the results framework requires active collaboration amongst regional and national teams. This will be anchored through-
 - Regular coordination meetings of regional and national focal points, MDB and donor representatives, to be undertaken quarterly during the first 18 months of implementation, and semi-annually thereafter.
 - Collaboration on key activities to be coordinated under the regional track, such as collection of bathymetric and topographic data, training and preparation and dissemination of lessons.
- Participation of regional track teams in CIF partnership meetings will be critical to ensuring effectiveness of the linkages and achieving objectives in the results framework.



THANK YOU!!!!!!

