



# THE CARIBBEAN TRACK PPCR AND PROPOSED STRATEGIC PROGRAM

*Presentation by the Caribbean Community Climate Change Centre  
to*

*PPCR Sub-Committee Meeting*

*Date: November 2, 2011*

*Place: Washington, D.C.*

# PHASE 1: PPCR AND THE DEVELOPMENT OF THE SPCR

## ○ Preparation Process-

- Review of outputs from CPACC, ACCC, MACC, & SPACC.
- PPCR Consultation with regional agencies.
- Drawing on consultation outputs from the development of the Regional Framework and IP processes.
- Incorporating articulated priorities and SPCRs of Caribbean PPCR Pilot Countries.



# COMPONENT 1: PILOTING EVIDENCE BASED CLIMATE ADAPTATION — LEAD AGENCY - CCCCC

## ○ Aim

- Improving the quality and level of climate relevant data for risk analysis and adaptation

## ○ Sub-components

- Collection of topographic and bathymetric data, aerial imagery digital elevation models
- Data processing and analyses
- Training for data hosting, management and application
- Applied analysis, knowledge management and application



## COMPONENT 2: SUPPORTING THE IMPLEMENTATION OF A GLOBAL FRAMEWORK FOR CLIMATE SERVICES IN THE CARIBBEAN – LEAD AGENCY – CIMH/CMO

### ○ Aim

- Incorporate climate risk management approach to sustainable development

### ○ The Sub- Components

- Increase regional contribution to GCOS, GLOSS and GOOS.
- Capacity for provision of enhanced or new climate products (subcomponent 2 and 3).
- Knowledge and information sharing to ensure benefits to PPCR pilot and non-pilot countries.




# COMPONENT 3: ENHANCING THE REGIONAL CLIMATE CHANGE NETWORK TO FACILITATE TWO-TIER MODELING FOR CLIMATE RESILIENCE – LEAD AGENCY - UWI

## ○ Aim

- Strengthen the regional climate modeling capacity and support adaptation planning.

## ○ Sub-Components

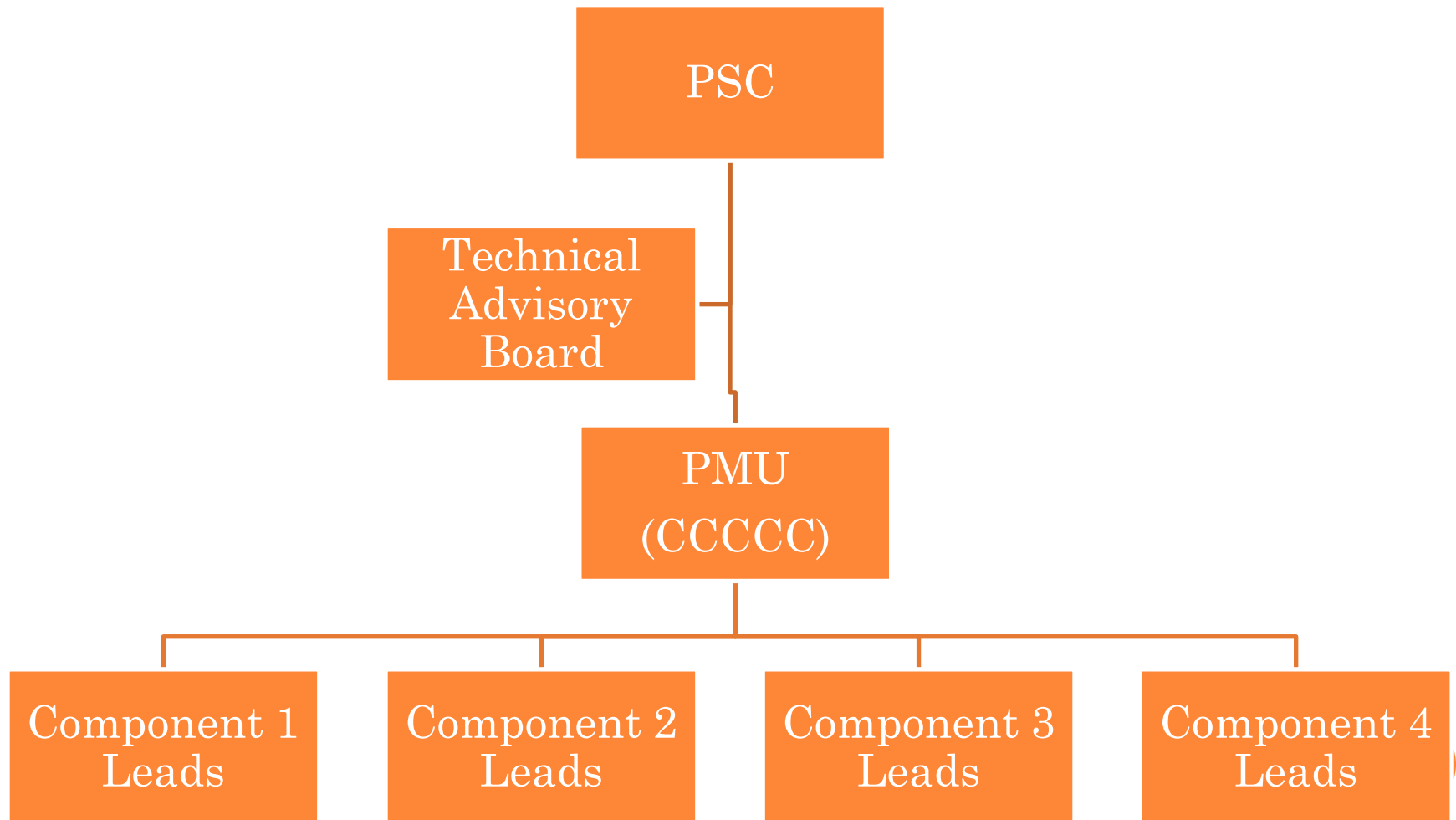
- Hazard map activity to be transferred to component 1 for greater synergy
  - Undertake a 3 prong approach to modeling
    - Multi-emission scenarios for climate modeling
    - Use results to support vulnerability and impact modeling
    - Utilize outputs from impact modeling to formulate cost evaluation of adaptation interventions
- 

# COMPONENT 4: APPLIED ADAPTATION INITIATIVES – LEAD AGENCY - CCCCC

- Aim:
  - Enhance the region's climate resilience
- Sub Components
  - 4a: Use the data, impact assessment and assessed cost effective adaptation interventions to undertake prefeasibility analysis.
  - 4b: Propose specific interventions, including the preliminary ones identified by regional stakeholders.
    - Building on CPACC, ACCC, MACC, SPACC
    - Typologies for Regional Framework and IP
    - Responding to needs of regional stakeholders



# THE SPCR IMPLEMENTATION STRUCTURE AND THE THREE-ONE PRINCIPLE



# SPCR AND REGIONAL PROGRAMS: THREE – ONE IN ACTION

- Regional Framework and IP
  - GCCA – CARIFORUM Programme
  - DFID/CCCCC/CDB – Enhanced Regional Resilience
  - CDKN/5Cs – Develop Risk Management Process
- Other initiatives, including
  - Regional Public Goods
  - Carbon Neutral Project





# THE WAY FORWARD

- Data Consultant is being contracted.
- Defer consultancy for climate risk screening tool to coincide with CDKN/5Cs Project.
  - PPCR activity will involve application of the climate risk screening tool to be developed and will entail the stress test of the revised risk management framework in 2 PPCR pilot countries (proposed Jamaica and Haiti).
- Circulate the review from the external reviewer.
- Respond to/incorporate external reviewer comments.
- Seek SC endorsement of the SPCR via conference call to be facilitated by the IDB.
- Subsequent to endorsement by the SC, submit SPCR by mail for endorsement.



*THANK YOU!!!!!!*

