

*“Resilience is not about accepting the caprices of Mother Nature. Rather, it is about managing our natural environment in a responsible manner, in the quest for a better future, for the sake of all of us”.*

Président Martelly

# OUTLINE OF PRESENTATION









1. Situation analysis
2. Institutional challenges and response
3. Consultation and planning process
4. Guiding principles
5. The components
6. Implementation arrangement
7. Caribbean Regional Program links
8. Linkages to other existing programs
9. Gender
10. Next steps

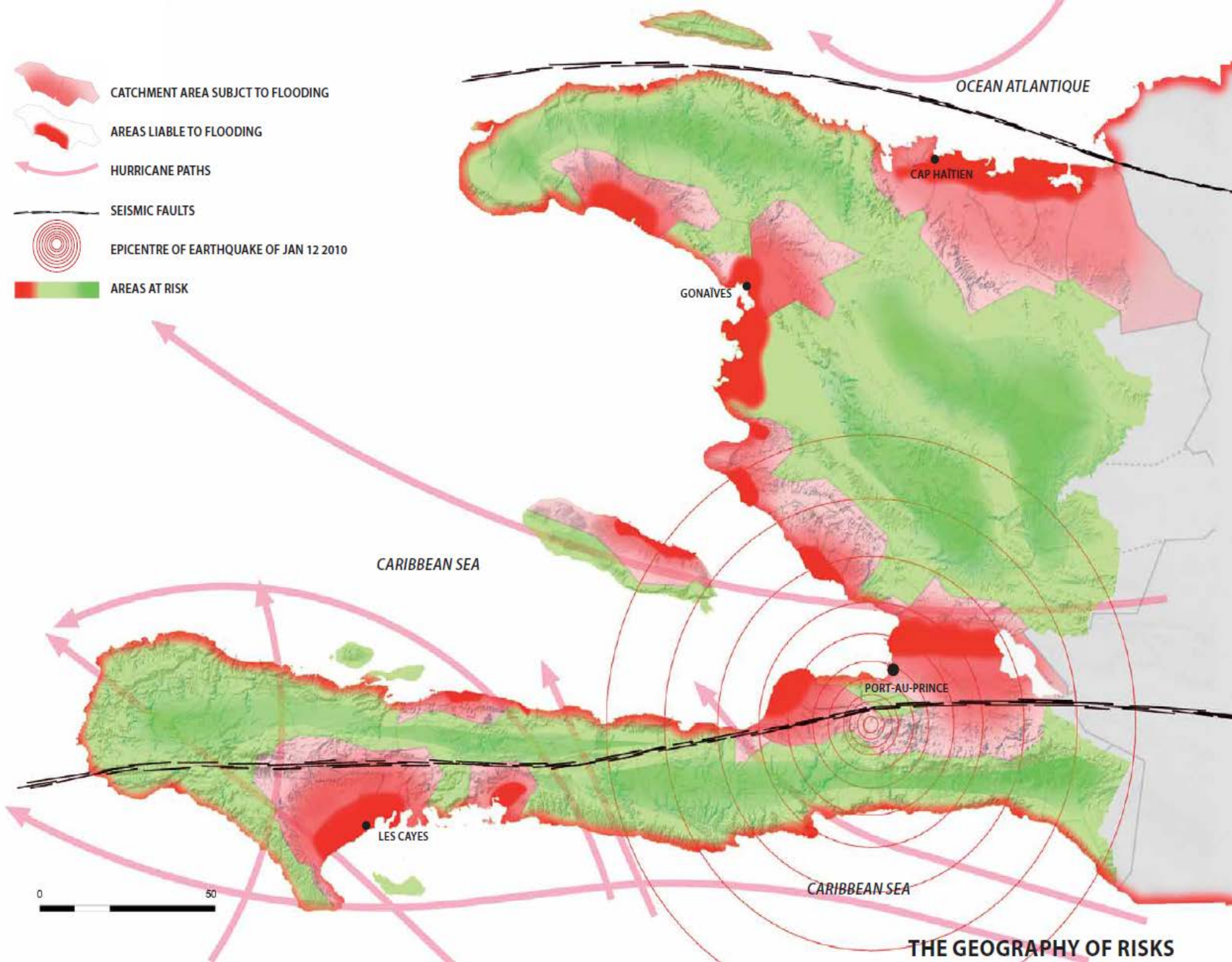


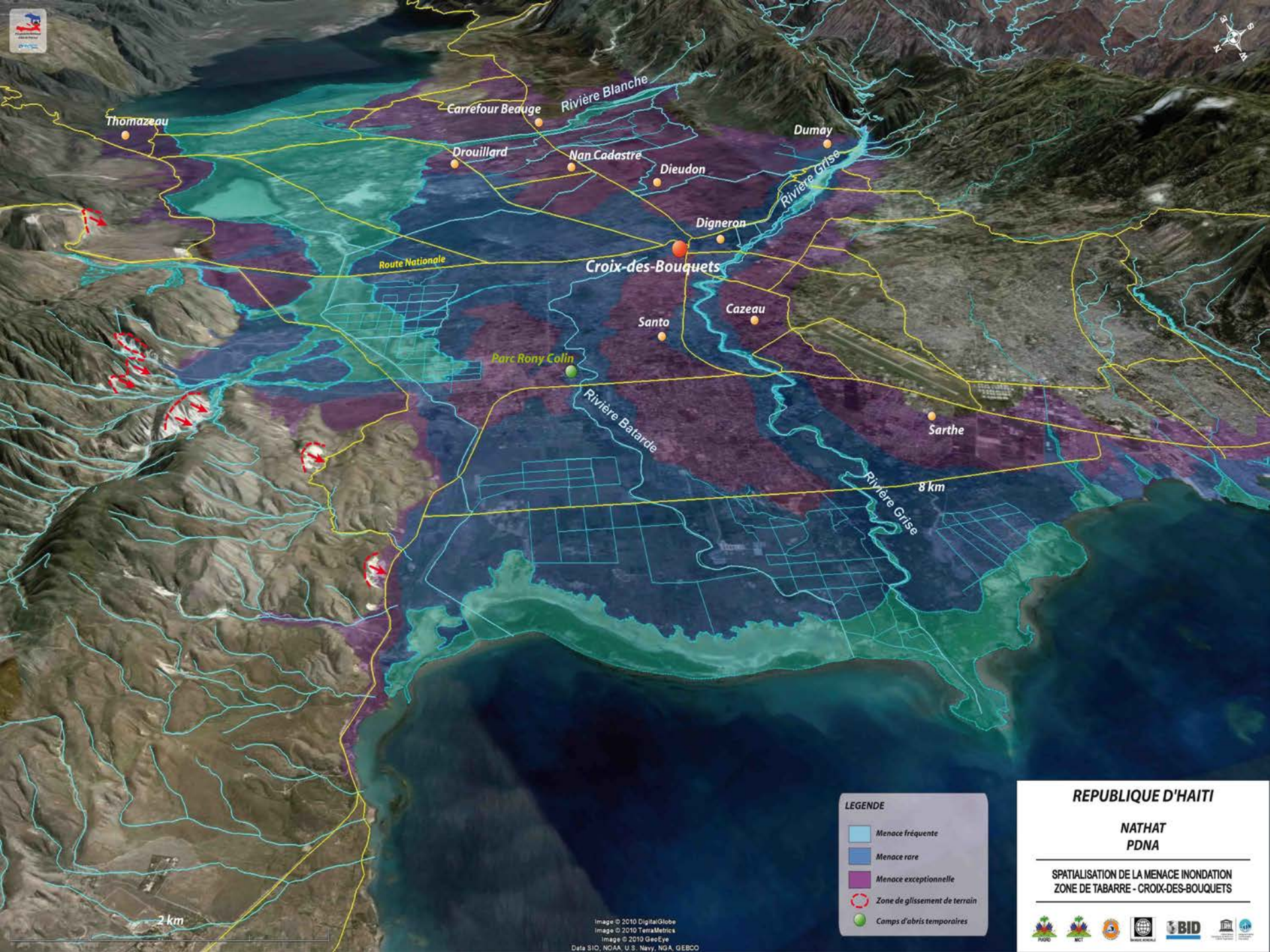
# 1. Situation analysis

## A COUNTRY AT RISK

- ⊙ Extreme poverty, severe deforestation and soil erosion, poor building practices
- ⊙ High vulnerability: **96%** of population living at risk
- ⊙ High exposure: **50%** population in 4 most vulnerable cities
- ⊙ Population increase: **16 million** habitants by 2030
- ⊙ In the last decade: **17 hurricanes** resulting in 3,600 deaths & affected 800,000 people
- ⊙ **50%** of Haitian face moderate food insecurity
- ⊙ Loss and damage, resulting from Fay, Gustav, Hanna and Ike tropical cyclones in 2008 was estimated in **15% of GDP**
- ⊙ Increased severity of tropical storms
- ⊙ Increased incidence of droughts

-  CATCHMENT AREA SUBJECT TO FLOODING
-  AREAS LIABLE TO FLOODING
-  HURRICANE PATHS
-  SEISMIC FAULTS
-  EPICENTRE OF EARTHQUAKE OF JAN 12 2010
-  AREAS AT RISK





**LEGENDE**

- Menace fréquente
- Menace rare
- Menace exceptionnelle
- Zone de glissement de terrain
- Camps d'abris temporaires

**REPUBLIQUE D'HAÏTI**

**NATHAT  
PDNA**

---

**SPATIALISATION DE LA MENACE INONDATION  
ZONE DE TABARRE - CROIX-DES-BOUQUETS**

---








Image © 2010 DigitalGlobe  
Image © 2010 TerraMetrics  
Image © 2010 GeoEye  
Data SIO, NOAA, U.S. Navy, NGA, GEBCO





## 2. Institutional challenges and response

---

### MAJOR INSTITUTIONAL CHALLENGES

- ⊙ Weak institutional capacities at Government level
- ⊙ 2010 earthquake impact on GoH capacity (loss of staff, equipments, etc.)
- ⊙ Crisis mode vs. long-term planning
- ⊙ PPCR development was put on hold after the earthquake
- ⊙ Coordination challenges across line ministries and with a crowded international community with a predominant of “project-based” approach



## 2. Institutional challenges and response

### GoH RESPONSE

- ⊙ *Comité Interministériel d'Aménagement du Territoire* **CIAT**
- ⊙ GoH **coordination mechanism** for strategic long-term planning to complement emergency response
- ⊙ High level leverage capacity, **Prime Minister** management line
- ⊙ Mandate to coordinate action in areas key to climate resilience (land use, watershed management, etc.)
- ⊙ CIAT will establish a technical unit to supervise the implementation of **SPCR/PPCR**

# 3. Consultation & Planning Process

- ◎ SPCR **living consultation** process:
  - ▣ With **public institutions**: who is doing what ?
  - ▣ With **CSOs**: feedback on initial hypotheses
  - ▣ Regular meetings with **MDBs**: track schedule & deliverables

- ◎ Expert **technical assistance**
  - ▣ Agriculture & Climate change
  - ▣ Hydro-met tools & measurements

- ◎ **Mapping** of other climate-related initiatives in Haiti and at regional level





# 4. Guiding Principles

---

- ⦿ Build upon **NAPA** country priorities
- ⦿ Apply principles of **long lasting post-disaster recovery**
- ⦿ Reflect a balance between **urban & rural**
- ⦿ Link with regional **Caribbean** efforts and other existing projects (mainstreaming and implementation success)
- ⦿ **Seek complementarities** with existing (or future) CC-related projects
- ⦿ Choice of sites: combination of **most vulnerable** (PAP) and most beneficial to national resilience (BCA), **demonstration** effect
- ⦿ Sectoral priorities: address **sectors at risk** and respond cross-cutting **institutional** needs

# 5. SPCR Components

## OVERALL OBJECTIVE OF THE PROGRAM

Reduce vulnerability to climate change in target regions while forecasting the consequences and impacts of climate change on key sectors and strengthening the resilience of both rural and urban communities; and promoting long-term climate resilient development planning.

### COMPONENT 1

Climate Proofing of Infrastructures for economic development in the BCA

### COMPONENT 2

Climate Proofing of Agriculture and ensuring Food Security in the BCA

### COMPONENT 3

Building Climate resilience and protecting population in Coastal municipalities in the PAP area

### COMPONENT 4

Collecting and processing hydro-meteorological data to inform decision makers and development plans

# C1: Climate proofing infrastructure in the BCA \$8M

**Overall expected outcome:** Climate resilience of infrastructures in the BCA is promoted and sustained

## Specific objectives:

- Enhancing the strategic network of secondary rural roads for transport.
- Improving the structural network and developing sustainable critical main roads.
- Climate-proofing investments in poles of economic growth
- Creating an enabling environment for sustainability of investments.

## Link to PPCR core results:

A1: Increased resilience of households, communities, businesses, sectors and society to climate variability and climate change

B1: Strengthened adaptive capacities

B5: Climate responsive investment approaches



**HAITI DEMAIN**  
**BOUCLE CENTRE-ARTIBONITE**  
OBJECTIFS ET STRATEGIES TERRITORIALES POUR LA RECONSTRUCTION



CIAT  
Comité Interministériel d'Aménagement du Territoire  
NOVEMBRE 2010



# C2: Climate proofing agriculture in the BCA

## \$4,5M

**Overall expected outcome:** climate-resilient agriculture and sustainable farming practices are promoted and diversified thus increasing income and resilience of rural communities

### Specific objectives:

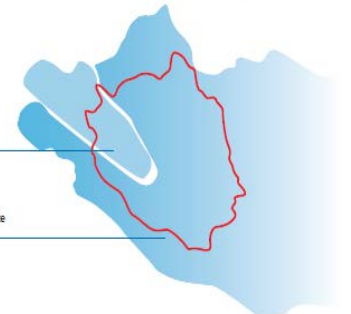
- Increase the volume of production of climate-resilient crops
- Enhance communities resilience by supporting local SMEs
- Protect and expand forest ecosystems.
- Promote preservation of forests and agricultural resources through oriented research
- Strengthen knowledge management and training on climate resilient agriculture



WATERSHEDS

Watershed of the Estère

Watershed of the Arribonite and the Central Plateau





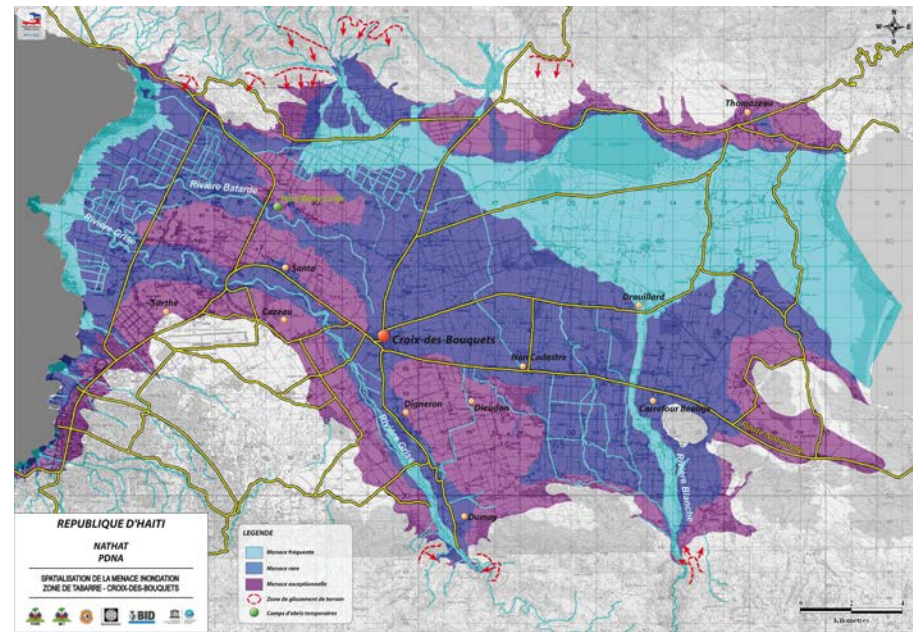


# C3: Climate Change adaptation in coastal cities \$7M

**Overall expected outcome:** Climate resilience of disaster planning and response in vulnerable cities of the PAP area is enhanced

## Specific objectives:

- Reducing risk factors in the watershed through work on gullies for floods control and creation of alternatives for people at risk on the coastline
- Creating decision-making tools and training materials for municipalities to plan for resilient coastal areas
- Producing basic data on coastal areas, such as LiDAR survey of the Léogâne-Saint-Marc coastal sector, production geo-spatial analysis (e.g., flood maps)





# C4: Hydromet information to mainstream CC in development planning \$5,5M

**Overall expected outcome:** Institutional, scientific, technical, and managerial capacities of the GoH to generate, disseminate, and apply knowledge on climate change are enhanced in order to create an effective policy dialogue that orientates decision making on climate-resilience issues.

## Specific objectives:

- Promoting a institutional basis for the collection and processing of climate data
- Rehabilitation of network of hydro-meteorological stations
- Establishing training schemes to close the technical capacity gap
- Energizing an informed policy dialogue on climate resilience at the country level
- Ensuring effective articulation of the PPCR and dissemination of relevant results

## Link to PPCR core results:

B2. Improved institutional framework in place

B3. Use of climate information in decision making routinely applied

A2. Strengthened climate responsive development planning



**NE PAS TOUCHER  
PA MANYEN**

**INSTRUMENT DE MESURE HYDROCLIMATIQUE  
POUR GÉRER LE RISQUE D'INONDATION**  
INSTRUMENT POUR GÉRER LE RISQUE D'INONDATION

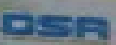
INSTRUMENT DE MESURE HYDROCLIMATIQUE  
POUR GÉRER LE RISQUE D'INONDATION

INSTRUMENT DE MESURE HYDROCLIMATIQUE  
POUR GÉRER LE RISQUE D'INONDATION

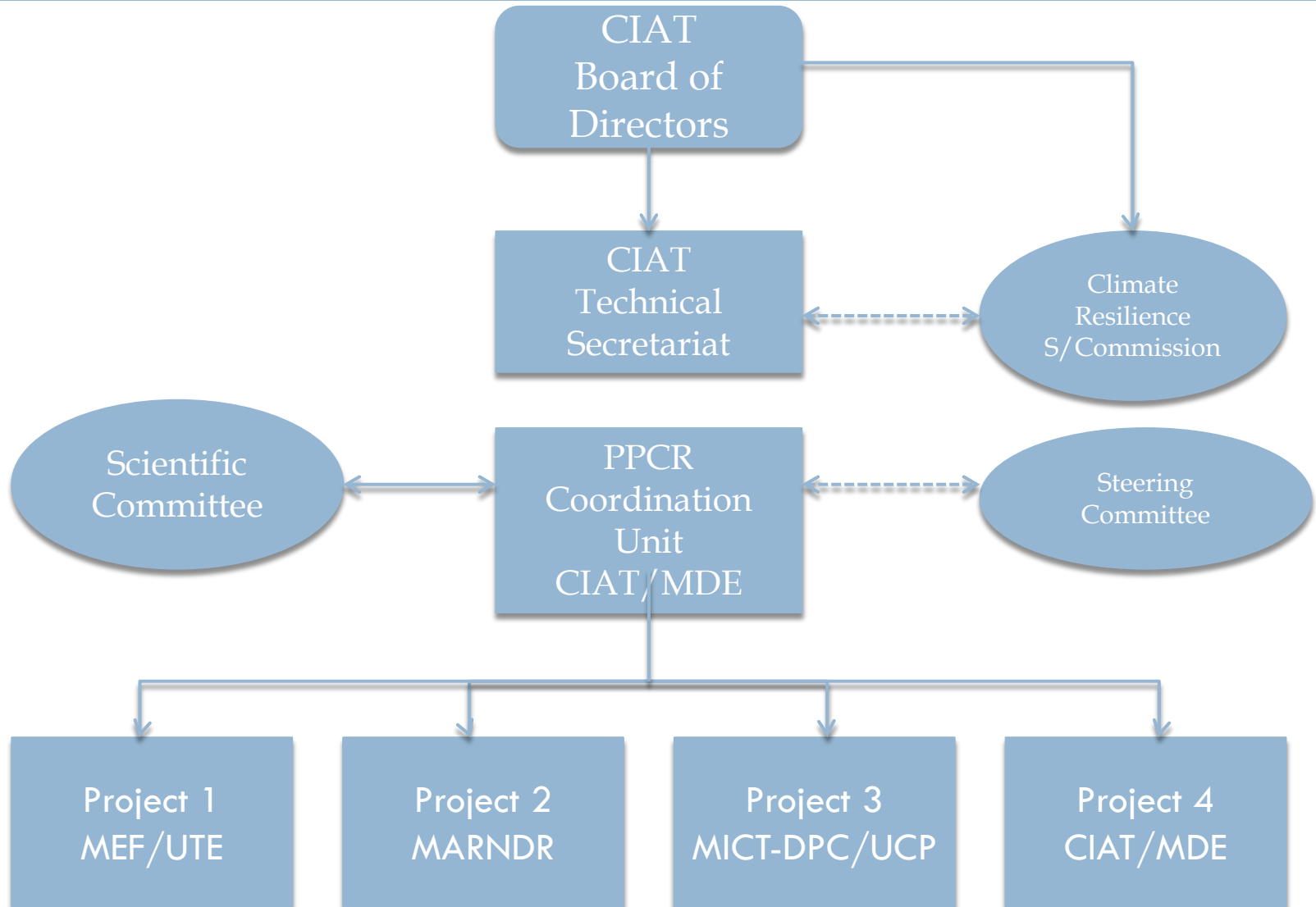
INSTRUMENT DE MESURE HYDROCLIMATIQUE  
POUR GÉRER LE RISQUE D'INONDATION

INSTRUMENT DE MESURE HYDROCLIMATIQUE  
POUR GÉRER LE RISQUE D'INONDATION

INSTRUMENT DE MESURE HYDROCLIMATIQUE  
POUR GÉRER LE RISQUE D'INONDATION



# 7. Implementation arrangements



# 8. Caribbean Program links

National PPCR programs and the Caribbean Regional Track are mutually supportive. Efforts in Haiti are geared towards improving climate resilience at the national level but also for the benefit of the region

## Caribbean regional track activity

- Improving Geospatial Data and Management for Adaptation Planning, Sea-level Rise, and Storm Surge Impact Analysis
- Consolidating and Expanding the Regional Climate Monitoring Network and Global Platform Linkages

## Haiti National Plan activity

- Coastal management and climate adaptation in the Léogâne - Saint-Marc coastal sector
- GCCA CARIFORUM support
- Capacity-strengthening of hydro-meteorological measurements and data processing



# 9. Gender issues



- ⦿ **Lack of gender-segregated data** on vulnerability: results from study “Effects of Climate Change on Gender and Vulnerable Groups” (under Caribbean Regional Track) are expected.
- ⦿ Gender equality is crucial for **agricultural development and food security**: Investment Project 2 will seek to strengthen the ability of women to generate revenue and add value to the crops.
- ⦿ Households in vulnerable **urban settlements in coastal areas** are women-headed: Investment project 3 will take gender-specific vulnerabilities into account.
- ⦿ **Gender specific indicators** will be tracked (e.g.1: # of women farmers supported under incentive scheme; e.g.2: # of women trained in sustainable farming)

# 10. Next Steps



- ⦿ Production of **specific studies**, assessments and climate projections to feed into project **baseline** and guide the detail of each of the Investment projects. (e.g.: hydro-met Data Rescue, analysis on food prices fluctuation)
- ⦿ A more precise **assessment of risks and mitigation actions** for a programme Risk Log and M&E Framework
- ⦿ Development of **Phase II PPCR Investment Plans**



# THANK YOU!

We welcome your comments and questions

For more information:

Luc Bretous: [Luc.bretous@ciat.gouv.ht](mailto:Luc.bretous@ciat.gouv.ht)

Rose-May Guignard: [rosemay@ciat.gouv.ht](mailto:rosemay@ciat.gouv.ht)



# CIAT

*Comité Interministériel  
d'Aménagement du Territoire*