



Haiti Strategic Program for Climate Resilience (SPCR) Status Report

PPCR Subcommittee Meeting
November 1, 2012 - Istanbul



CIAT

*Comité Interministériel
d'Aménagement du Territoire*

Update of SPCR

- * Context
- * Guiding Principles of SPCR/PPCR in Haiti
- * Institutional Set up for Climate Change
- * SPCR Planning Process
- * Framework for Transformation
- * Linkages
- * Description of Planned Investments
- * Next steps

Context

Climate Risks

96% of population living at risk.

16 million habitants by 2030; 50% in 4 highest risk cities

All contributing risk factors → regular disasters.

Past 10 years: 17 hurricanes/TS → 3,600 deaths & affected 800,000 people.

Increased severity of tropical storms

Increased incidence of drought

Latest Developments: [Sandy](#)

Institutions

Weak government institutions

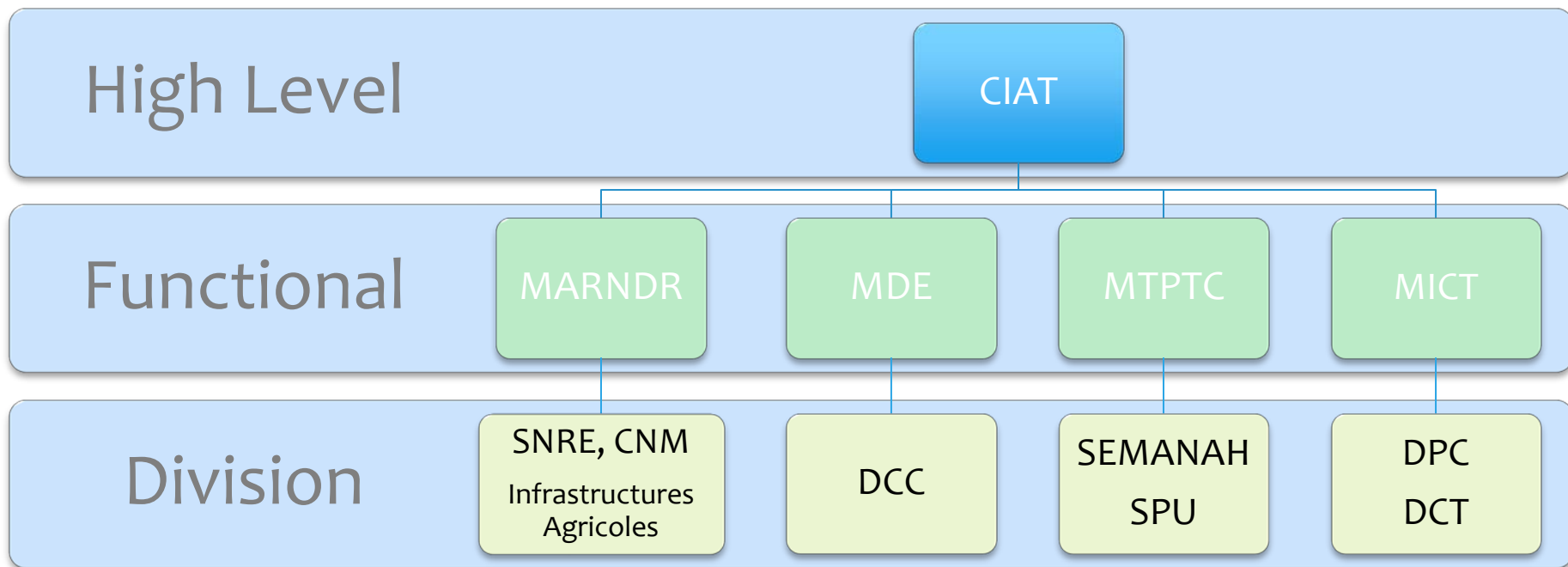
Earthquake in 2010 severely weakened government capacity

PPCR process put on hold after earthquake

Crisis mode v. long range thinking

CIAT : GoH coordination mechanism for strategic long-term planning to complement emergency response

Institutional Set up for Climate Change in Haiti





Guiding Principles

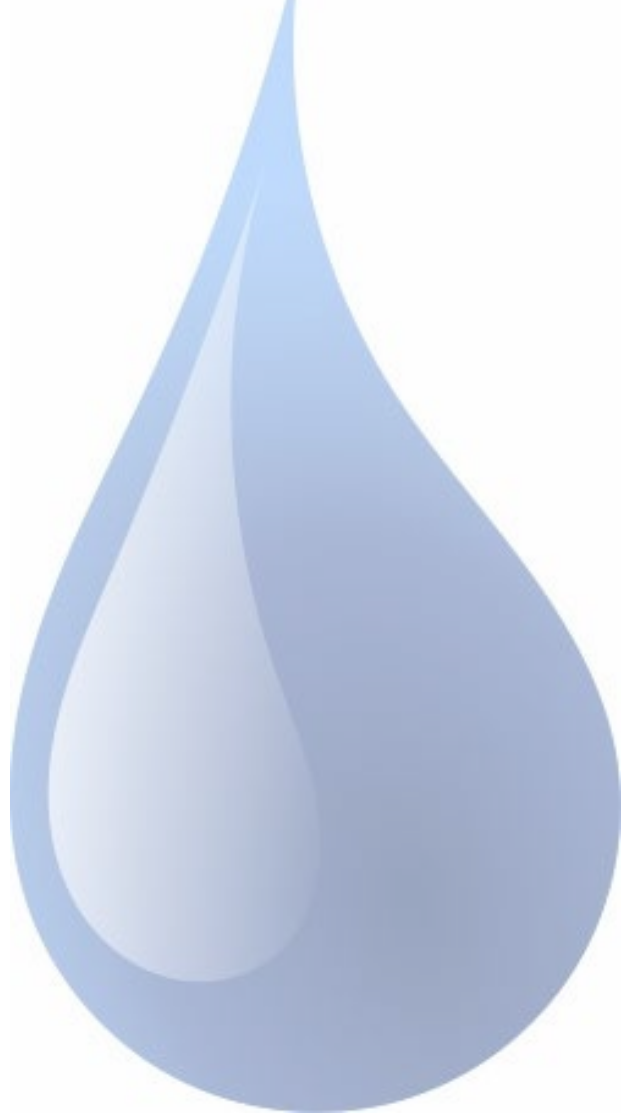
- * Build upon NAPA country strategies
- * Apply principles for reconstruction post-earthquake
- * Reflect a balance between urban & rural
- * Link with regional Caribbean efforts
- * Link with existing projects for mainstreaming and ensuring implementation success

SPCR Planning Process

- * Expert technical assistance
 - * Agriculture & Climate change
 - * Hydro-met tools & measurements
- * Consultation with public agencies
 - * Who is doing what ?
- * Consultation with civil society
 - * Feedback on initial hypotheses
- * Periodic meetings with funders
 - * Track schedule & deliverables



Haiti's Transformational Approach



Linkages

Objectives

Ensure that agricultural production withstand stresses of changing rain patterns and possible drought conditions

Put in place mechanisms to protect the urban population that lives coastal zones

Ensure good hydro-met data collection

Create capacity to implement resilience-related policymaking

Pipeline

Center-Artibonite loop regional development project

Reconstruction Efforts in metropolitan area

Caribbean region initiatives
WMO

institutional transformation

Component 1 (\$10-17M): Building Climate Resilience in the Artibonite loop integrated development project

Outcome: Improved food security, transport connectivity and economic development of the Artibonite and Centre regions

Planned activities:

- Support the development of climate resilient agricultural practices (diversification, processing) and agricultural research
- Improve the design and management of secondary road to increase all-weather access to high potential productive areas



HAITI DEMAIN
BOUCLE CENTRE-ARTIBONITE
OBJECTIFS ET STRATEGIES TERRITORIALES POUR LA RECONSTRUCTION



REPUBLIQUE D'HAÏTI

CIAT

Comité Interministériel d'Aménagement du Territoire

NOVEMBRE 2010

Component 3 (\$4M): Rehabilitating National Hydro-meteorological Services

Outcome: Improved use of climate and weather information for decision-making in civil protection, agriculture, water resources management, public infrastructure and environmental management

Planned activities:

- High-priority investments in the rehabilitation of the observation network and IT infrastructure
- Capacity building, data processing, modeling and dissemination initiatives
- Phased modernization of the main elements of NMHS infrastructure and human resources



Technical Assistance Project (\$2M)

Outcome: Improved capacity to coordinate the SPCR implementation and to mainstream resilience to climate change in reconstruction and development strategies

Planned activities:

- Support the policy dialogue on climate resilience
- Coordination, Monitoring and Evaluation of the SPCR
- Knowledge management and cooperation with regional and international institutions



Next Steps



- Finalization and submission of SPCR for endorsement in February 2013, in consultation with relevant stakeholders.
- Continuing the implementation of Phase 1 activities, with a focus on institutional arrangements, to set the stage for Phase 2 implementation.
- Preparation of detailed project documents, in collaboration with the MDBs, following endorsement of the SPCR.

Thank You!

I welcome your questions and comments



CIAT

*Comité Interministériel
d'Aménagement du Territoire*

Acronyms of public agencies

CIAT

• Comité Interministériel d'Aménagement du Territoire

CNM

• Centre National de Météorologie

DCC

• Division Changement Climatique

DPC

• Division de la Protection Civile

DCT

• Département des Collectivités Territoriales

MARNDR

• Ministère de l'Agriculture des Ressources Naturelles et du Développement Rural

MDE

• Ministère de l'Environnement

MICT

• Ministère de l'intérieur et des Collectivités Territoriales

MTPTC

• Ministère des Travaux Publics Transport et Communications

SEMANAH

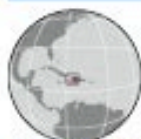
• Service Maritime et de Navigation d'Haiti

SNRE

• Service National des Ressources en Eau

SPU

• Service de Planification Urbaine



TS Sandy's path did not cross Haiti, but its rain-laden trails and strong winds wreaked heavy damage in the country, primarily Sud, Grande-Anse, Nippes and Ouest departments.

IMPACT OF TROPICAL STORM SANDY

1 **52** Deaths, **20** Injured, **20** missing

	Deaths	Missing	Injured
Artibonite	2	3	4
Centre	0	0	0
Grande-Anse	4	8	1
Nippes	4	1	0
Nord	0	0	0
Nord-est	0	0	0
Nord-ouest	2	0	0
Ouest	20	5	12
Sud	18	0	0
Sud-est	2	3	3
TOTAL	52	20	20



Roche a Bateau. Flooded road
Credit: Cote Sud Initiative



Roche a Bateau – private home flooded.
Credit: Cote Sud Initiative



Flooded Maize Farm (25 Oct)
credit: Humanitarian Focal Point of Sud



General Hospital in Les Cayes under water
(25-Oct) credit: Humanitarian Focal Point of Sud



Rozier - the sea attacks and destroys the road (Oct 25)
Credit: Cote Sud Initiative



Rozier - raging sea, rain and floods destroy the road one day later (Oct 25)
Credit: Cote Sud Initiative



3 **90** camps have been damaged **5768** families affected

COMMUNES WITH SOME FLOODED AREAS

Departments	Number of Communes	Communes
OUEST	13/20	Tabarre, Port-au-Prince, Croix-des-bouquets, Cite Soleil, Petit-Goave, Grand-Goave, Gressier, Leogane, Delmas, Cabaret, Ganthier, Thomazeau, Anse a Galet
SUD	11/18	Les Cayes, Chantal, Camp Perrin, Aquin, Chardonnières, Port-salut, Coteaux, Tibouron, St Louis du Sud, Les Anglais
SUD-EST	8/10	Jacmel, Marigot, Cotes de Fer, Belle Anse, Thlotte, Anse a pitre, Grand Gossier, Balnet
NIPPES	7/11	Petite Riviere de Nippes, Miragoane, Baradere, Grand Boucan, L'Asile, Palliant, Anse-a-Veau
GRANDE-ANSE	5/12	Jeremie, Bonbon, Les Irois, Moron, Chambelan

Departments	Number of Communes	Communes
ARTIBONITE	4/15	Grande Saline, Verettes, Desdune, St Michel de l'At.
NORD	1/14	Limonade
NORD_OUEST	1/10	Baie de Henne

Photo Credits:

Jean Philippe Viala, photos on slides 1 & 14

Ellie Van Houtten, photos on slides 12 & 13

Zurcher Mardi, photos on slide 6