



Belize Plans for the Future:

THE NATIONAL CLIMATE RESILIENCE INVESTMENT PLAN

**Government of Belize
Pilot Program for Climate Resilience
Sub-Committee Meeting
Washington, DC
November 1, 2013**



Overview



- Climate Impacts
- Transformational Shift
- Analysis and Consultation
- Moving Forward

THE CARIBBEAN



BELIZE

JAMAICA

HAITI

DOMINICAN REPUBLIC

ANTIGUA & BARBUDA

ST. KITTS & NEVIS

DOMINICA

ST. LUCIA

ST. VINCENT & THE GRENADINES

BARBADOS

GRENADA

TRINIDAD & TOBAGO

GUYANA

SURINAM

Snapshot of Belize

An aerial photograph of a coastal town in Belize, showing a mix of residential buildings, palm trees, and a large bay with several sailboats. The town is built on a peninsula that curves into the water. The water is a deep blue, and the sky is clear. The overall scene is a typical tropical coastal setting.

- 316,280 population (2011)
- US\$4,577 GDP per capita (2011)
- 41% living in poverty (2009)
- > 50% of population near coast
- ~2/3 of land cover is forested



This week

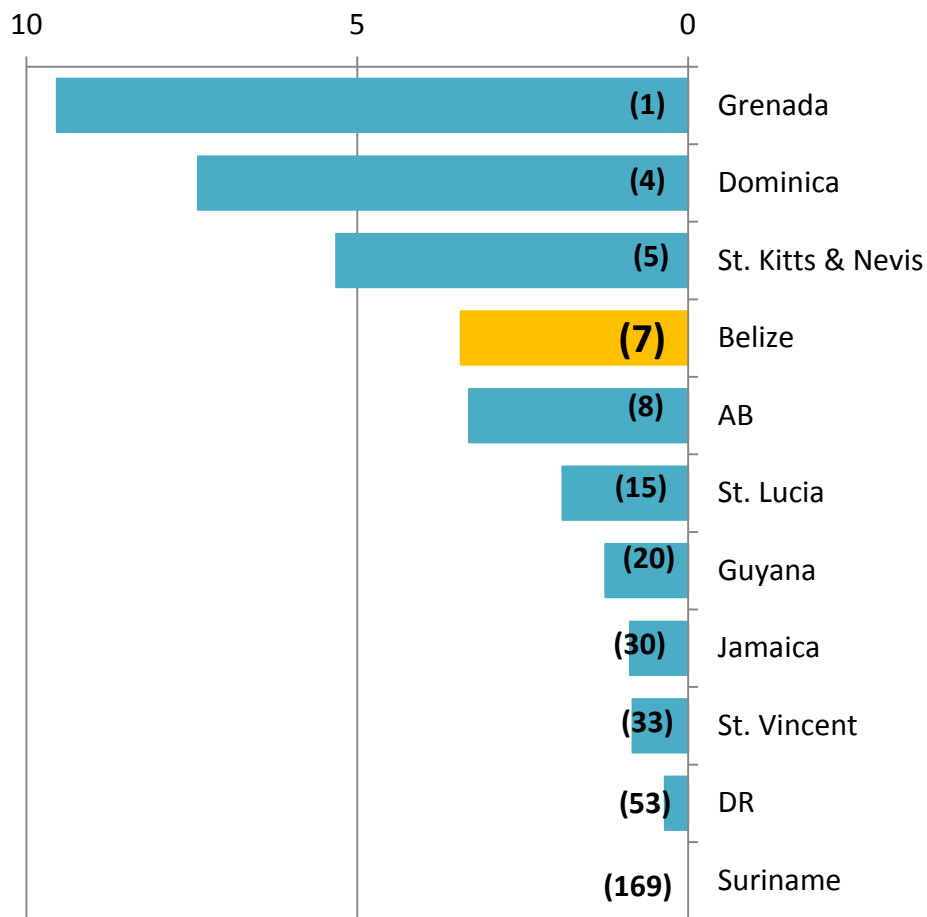


Two days ago

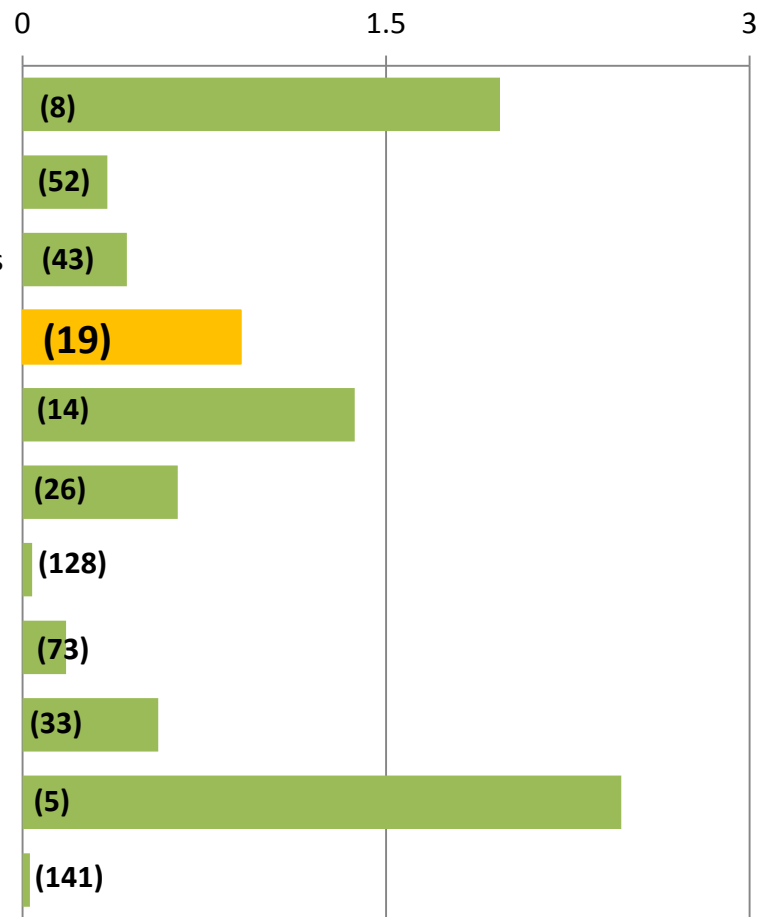


Belize ranks 7th highest in average losses from extreme weather events (1992-2011)

Average Annual Losses per GDP (%)



Deaths per 100,000 inhabitants



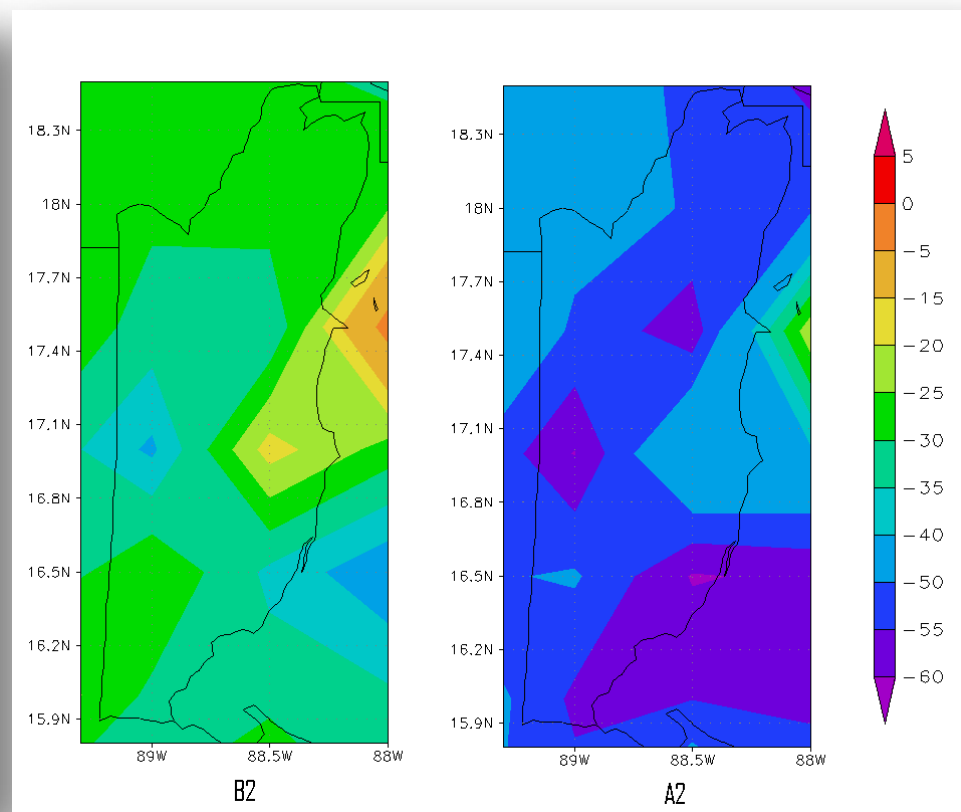
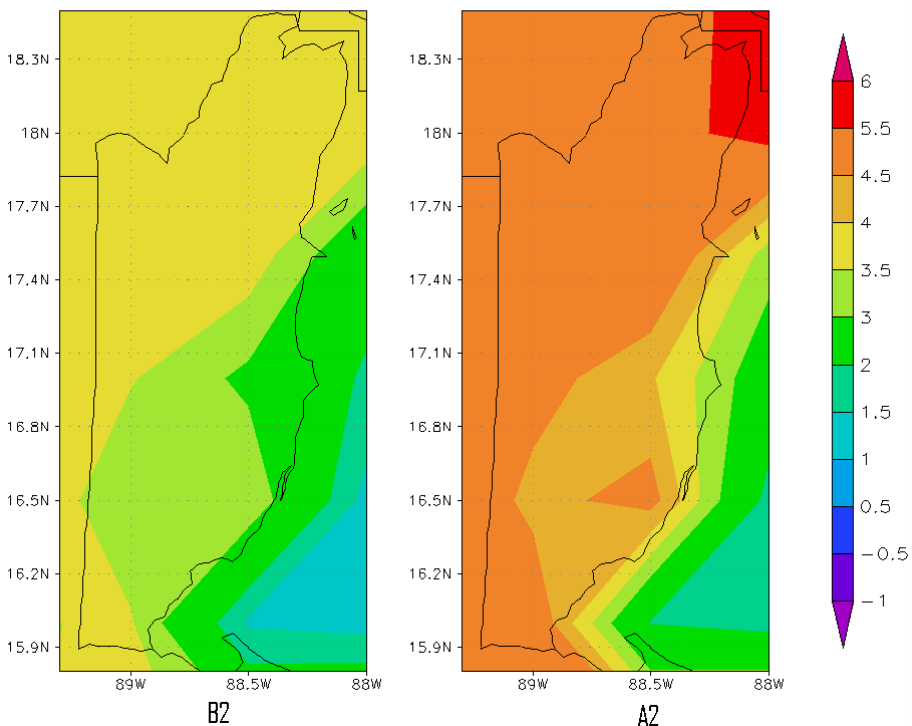
- () indicate Global Rank of 183 countries or territories evaluated.
- Sorted by Losses per GDP (%)



Belize expects more intense and increased variability in climatic events

Changes in temperature

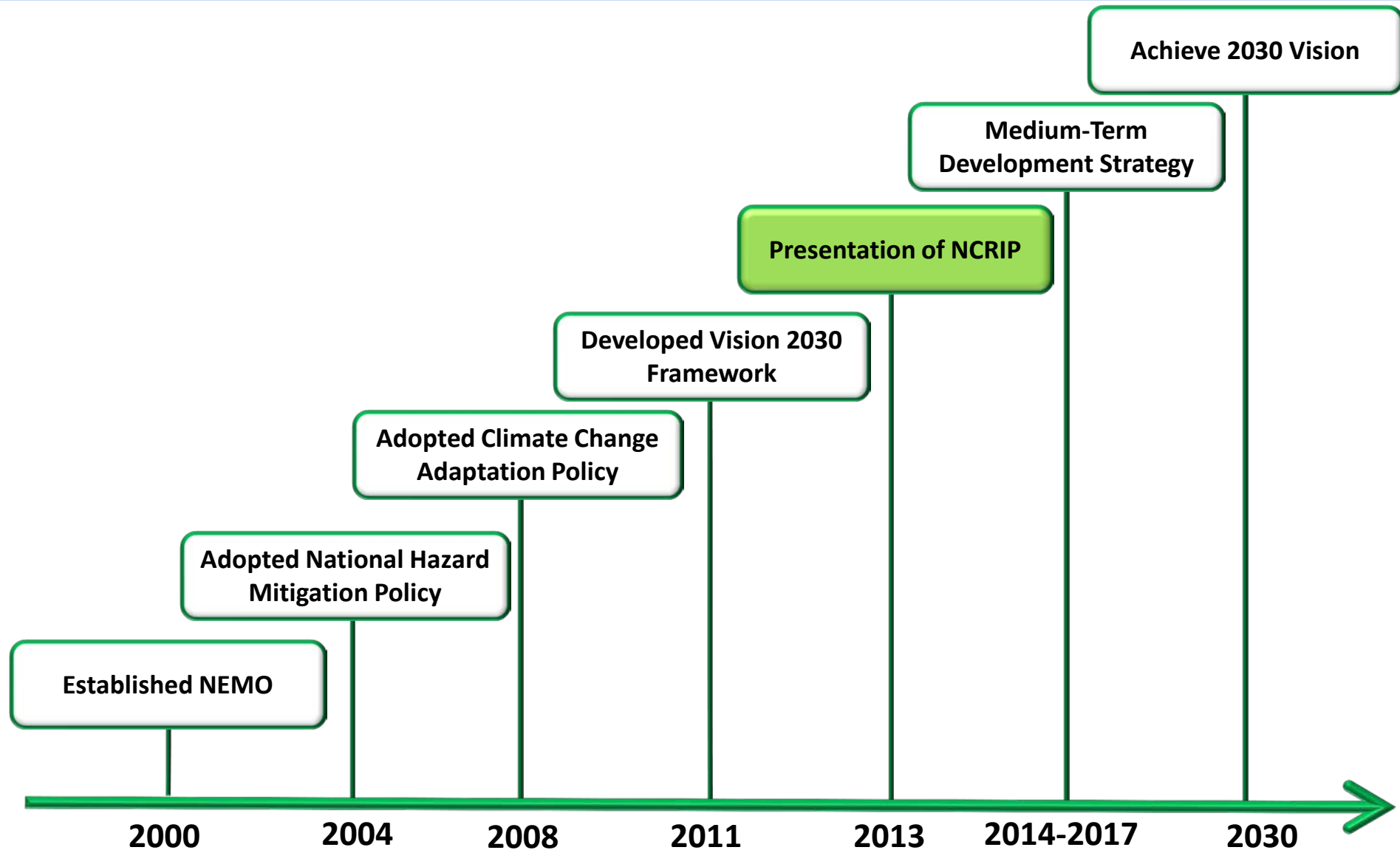
Changes in precipitation



Source: Taylor et al 2013

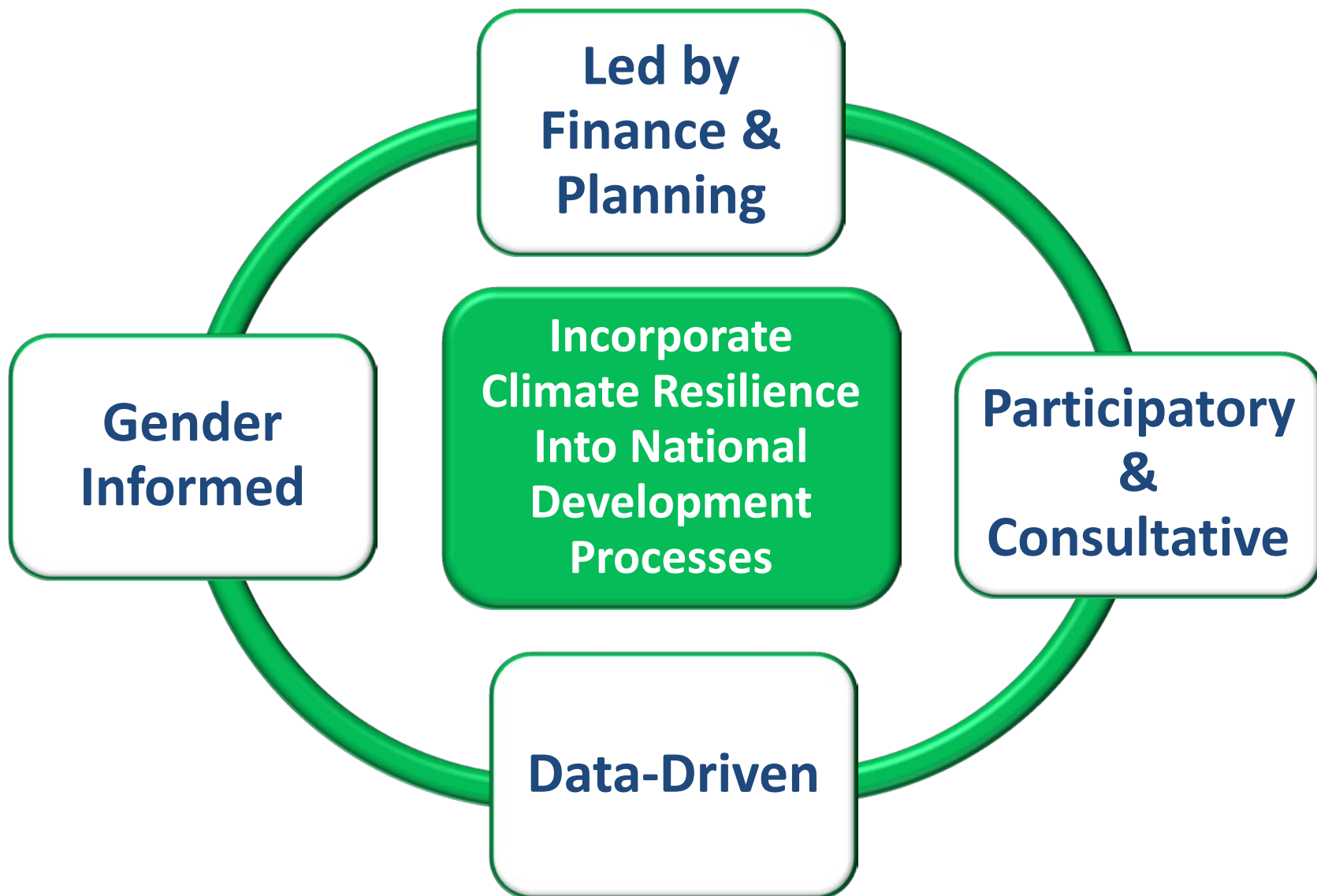


Belize evolves towards climate resilience





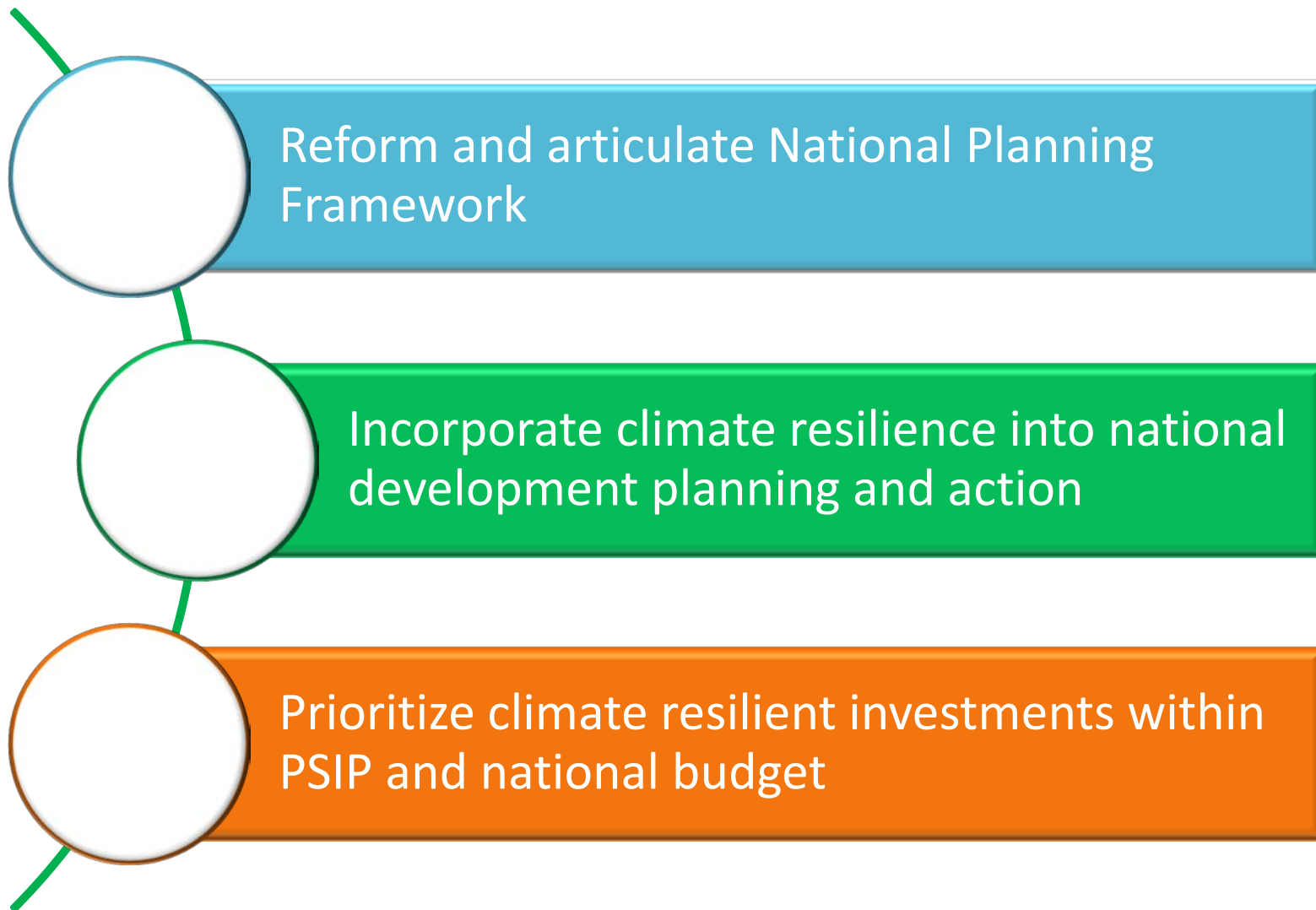
Belize benefits from knowledge and experiences of the PPCR





Belize embarks on a transformational shift

MOFED





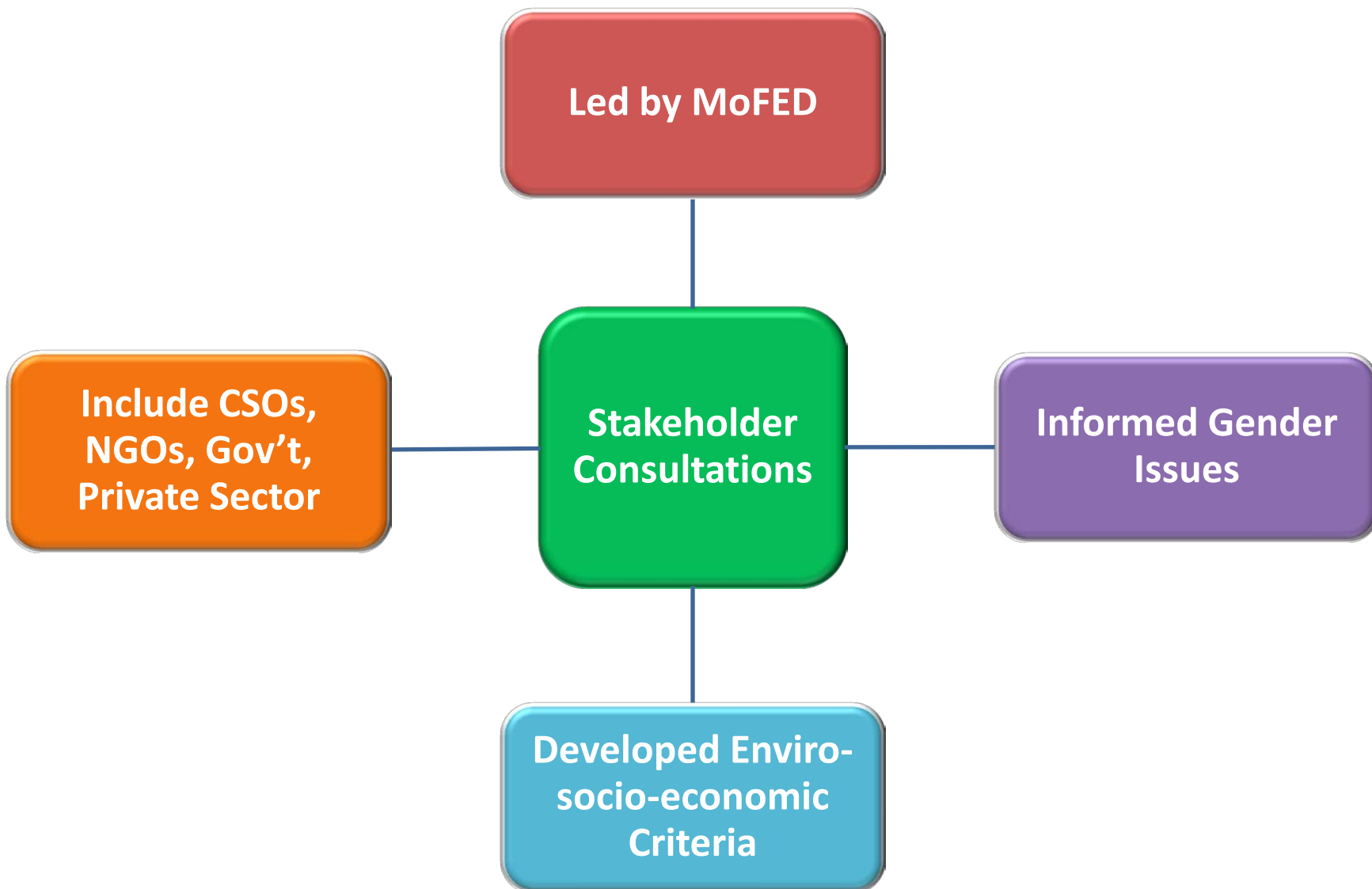
National Climate Resilience Investment Plan [NCRIP]

Government of Belize

OCTOBER 2013



Stakeholder engagement is integral to the NCRIP development and implementation

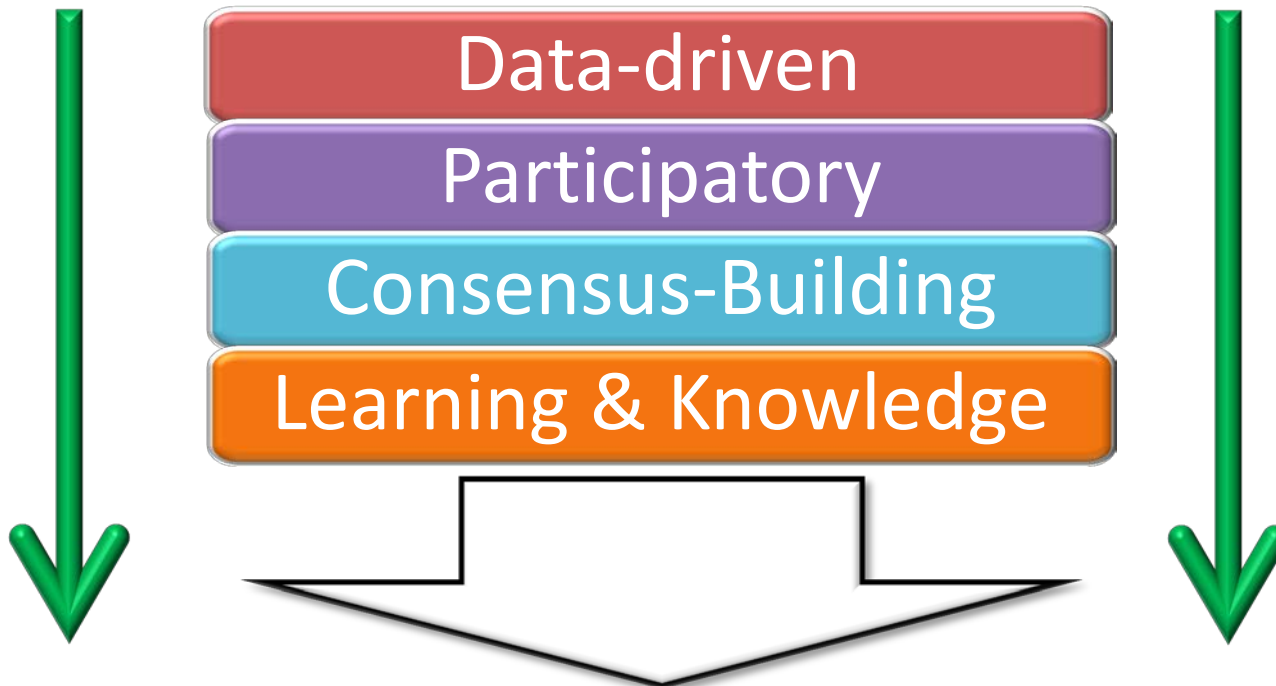




Multi-criteria evaluation (MCE) developed for physical infrastructure investments

Criticality

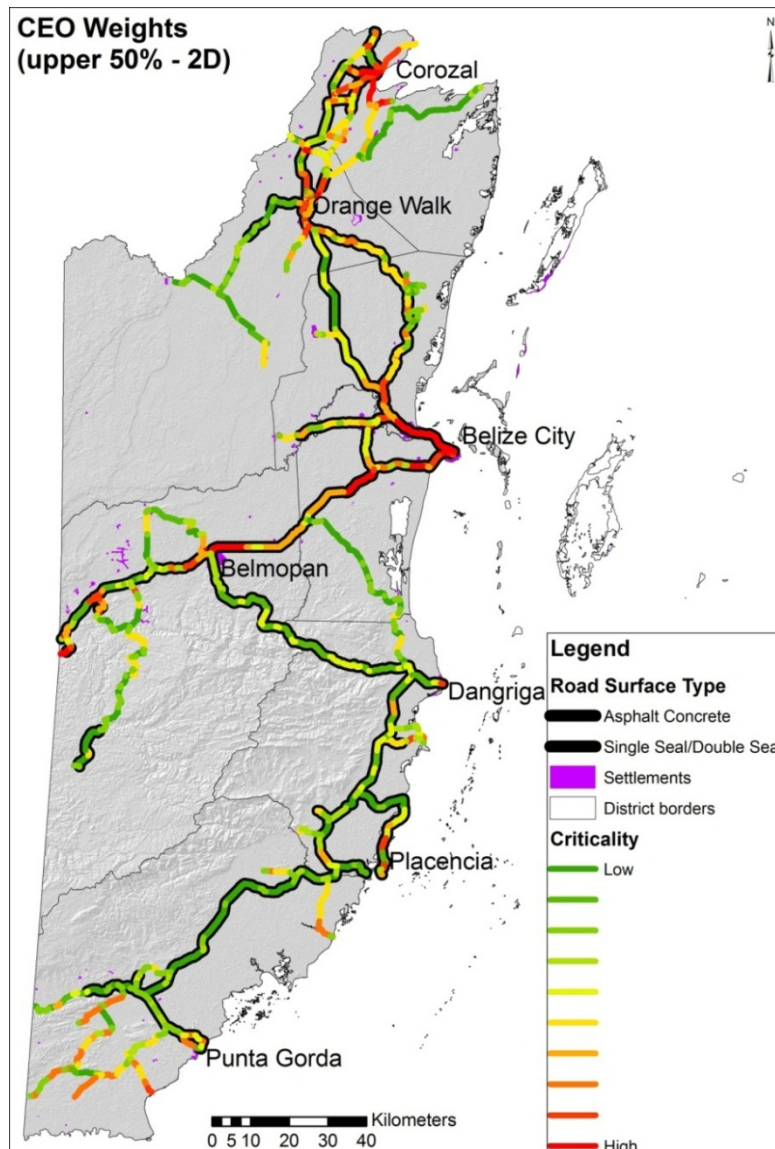
Hazard



**Informed decisions to prioritize investments
in the transportation sector**



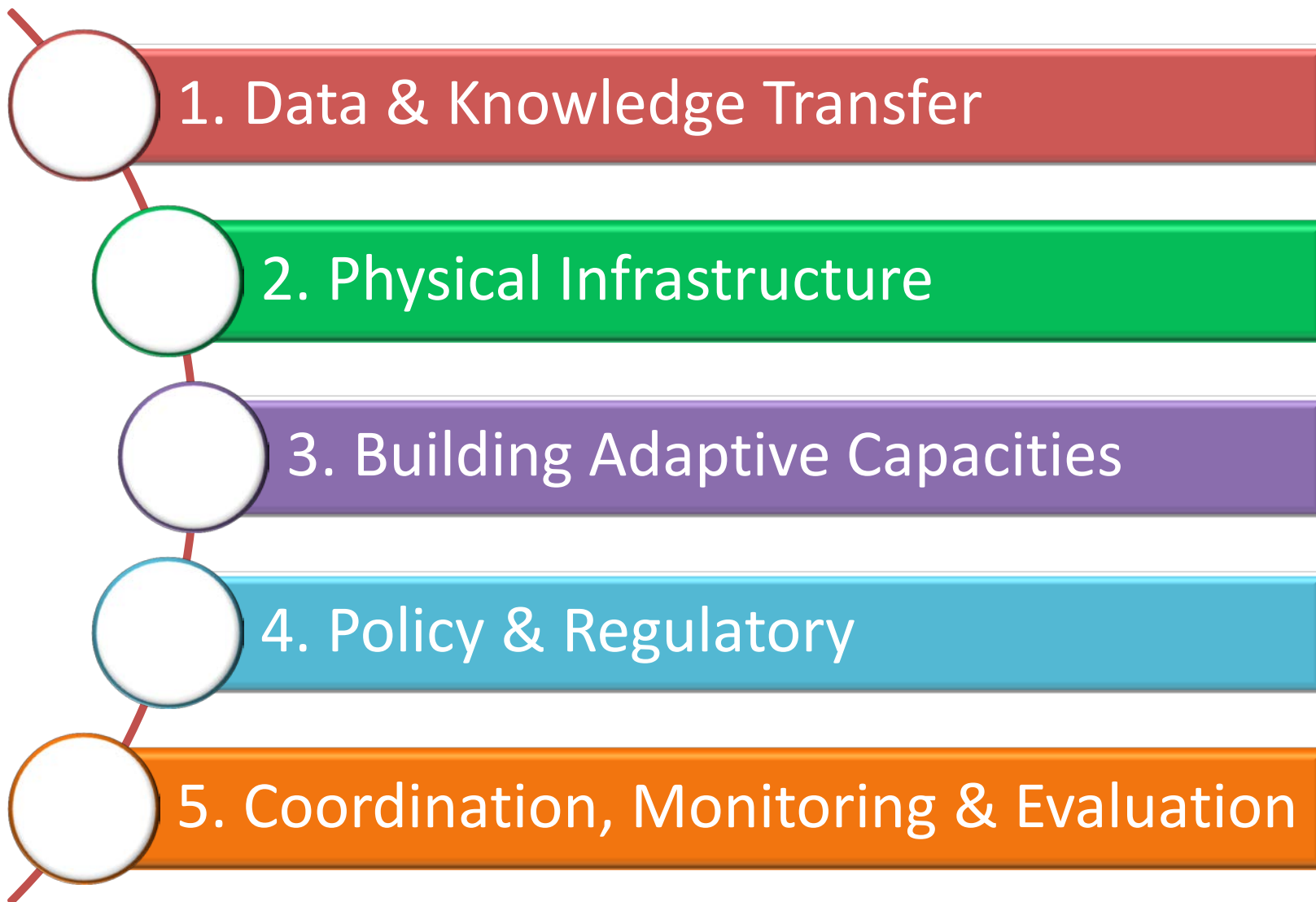
This tool produced outputs to evaluate risk reduction measures and prioritize investments





NCRIP components are mutually reinforcing

NCRIP





NCRIP interventions take into account both current and future risks

1

- 1.1 Hydro-meteorological , topographic, and bathymetric data road-map
- 1.2 National spatial data and climate project

2

- 2.1 Critical assets: roads, drainage, public buildings & public transport
- 2.2 Land-use & infrastructure plan
- 2.3 Coastal logistics: ports and airports
- 2.4 Utilities: energy, water and wastewater
- 2.5 Prevention coastal erosion

3

- 3.1 Resilient agricultural & forestry practices and trials
- 3.2 Diversifying fishermen income
- 3.3 Mainstreaming climate resilience in tourism and transport sector master plans:
- 3.4 Emergency response and recovery capacity

4

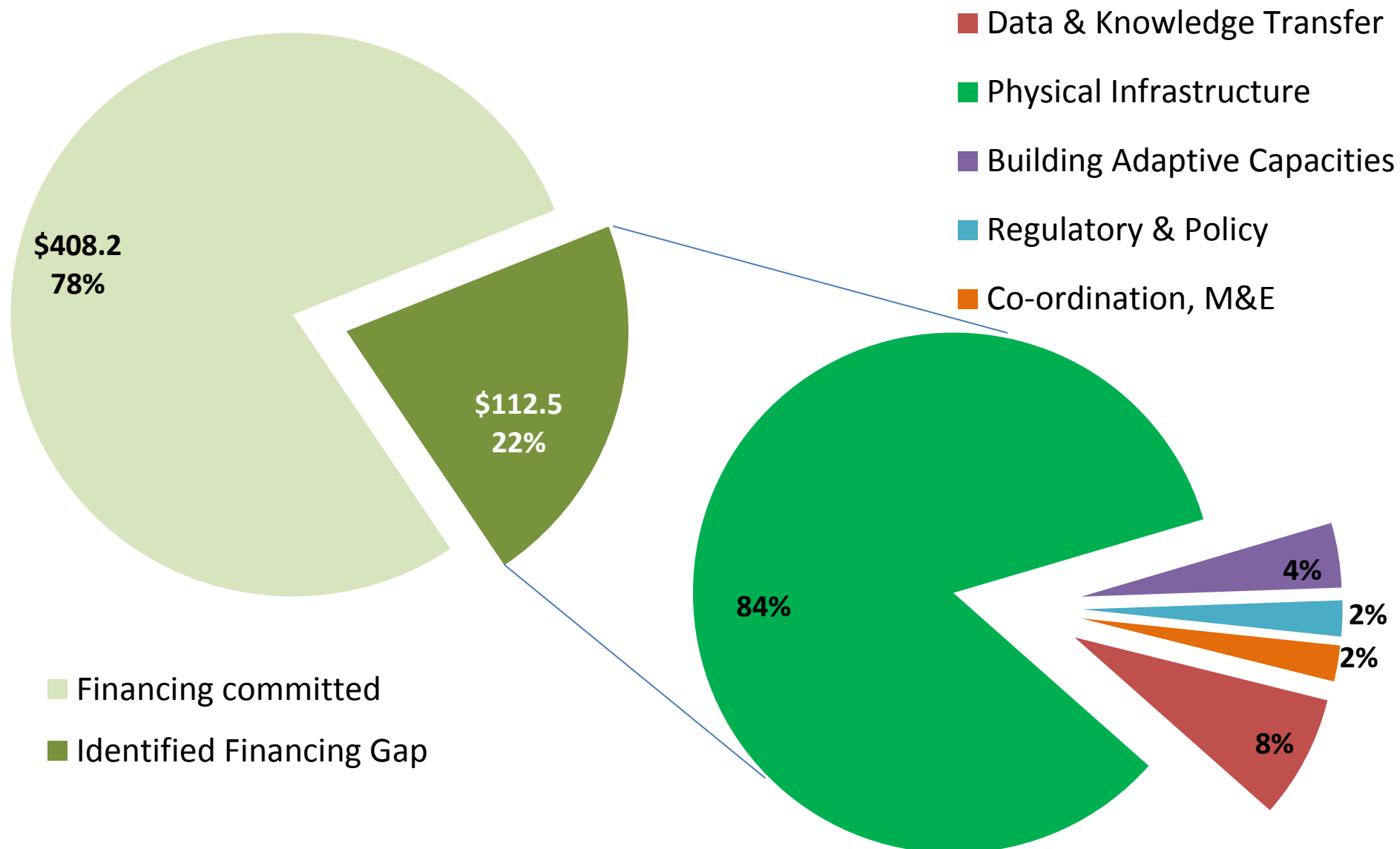
- 4.1 Green building measures
- 4.2 Marine regulation
- 4.3 Integrating priority investments in to the PSIP
- 4.4 Coordination of climate resilience assistance by MDBs and development partners

5

- 5.1 Implementation, M&E of the NCRIP with regular interim reviews and amendments as necessary



NCRIP identifies additional financing needs of US\$112 million



Belize is ready and committed

- To engage partners
- To leverage resources
- To pursue sustainable development

Belize is moving forward

- Will implement the NCRIP...
- Invites the international community to partner with us on the road to sustainable development



Belize Plans for the Future:

THE NATIONAL CLIMATE RESILIENCE INVESTMENT PLAN





Annex

- Slides for consideration to be incorporated into the presentation



Belize severely devastated by fatal floods



Home » Disasters » Major flooding affects western and southern communities and kills a Succotz man

Oct 28, 2013

Major flooding affects western and southern communities and kills a Succotz man



The torrential rains over the weekend affected southern and western communities where water levels rose significantly. The flooding has already taken one life. In Succotz, a man, sixty-five year old Carlos Valdez died after his dorey capsized while crossing the river and we'll bring you all the details of that story on Tuesday. News Five headed elsewhere in the west where communities were experiencing flooding in their homes, yards and streets. While in some areas, waters are receding, rain is forecasted for the rest of the week. Duane Moody has a report on how communities are faring off.



advertise | [Contact Us](#)

HEADLINE IMAGES

[Floods Beset Belize, One Man Loses Life In Roaring Mopan River](#)

Relentless rains caused flooding in the Cayo, Stann Creek, Toledo and Belize Districts this weekend - and tonight, we have the first casualty to report. 65-year-old farmer Carlos Vald...

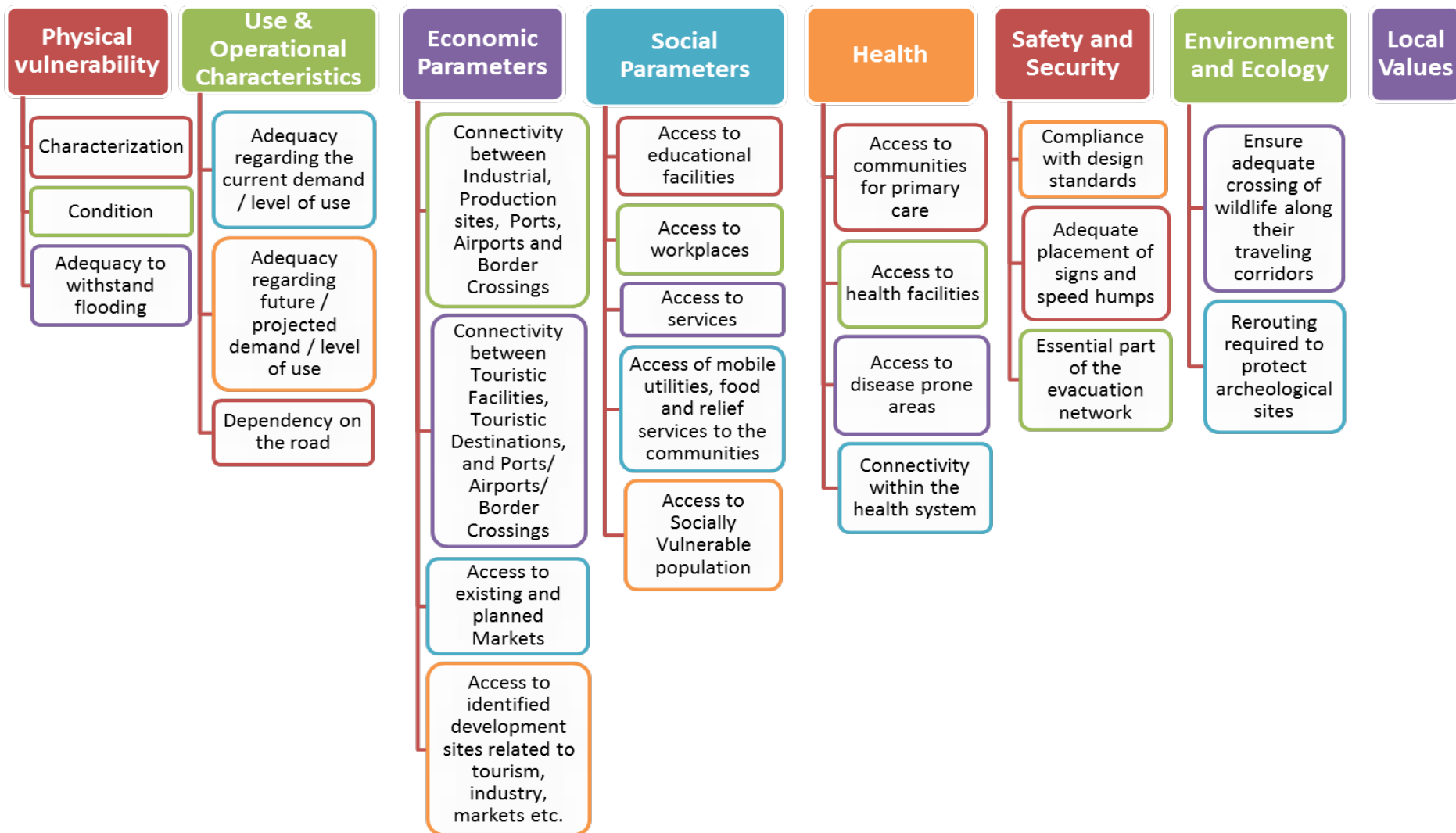
[Floodwaters All Across the Land](#)

Presently, flooding is being experienced in most parts of the country. In Santa Elena, the temporary bridge is completely submerged - and this morning the area was best used by recr...





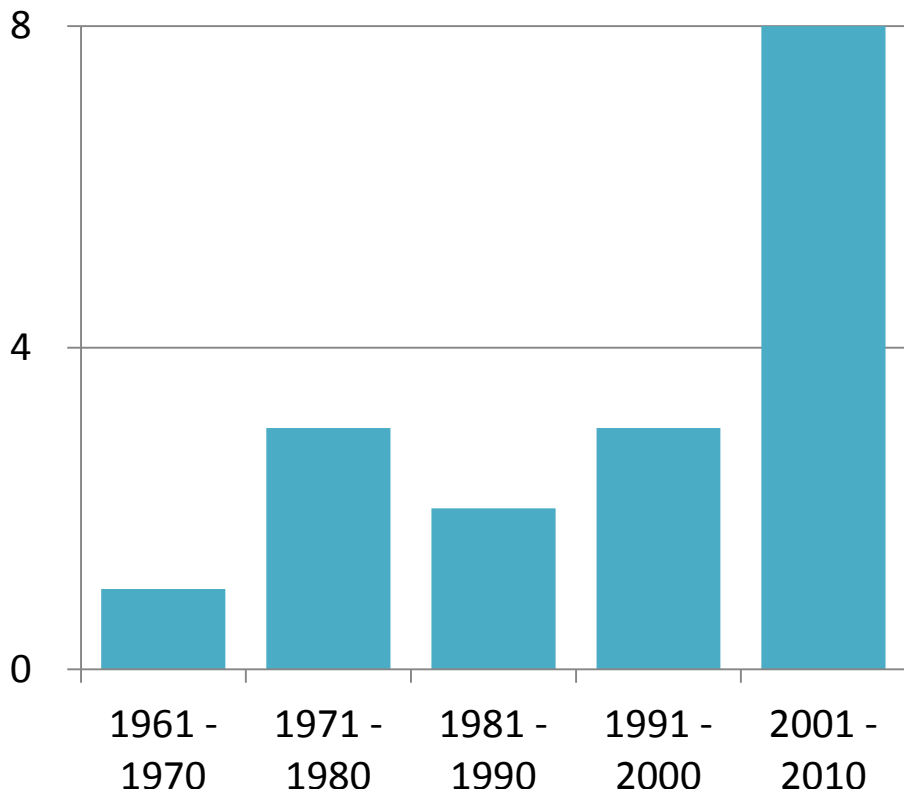
Criticality: Multi-Criteria Evaluation



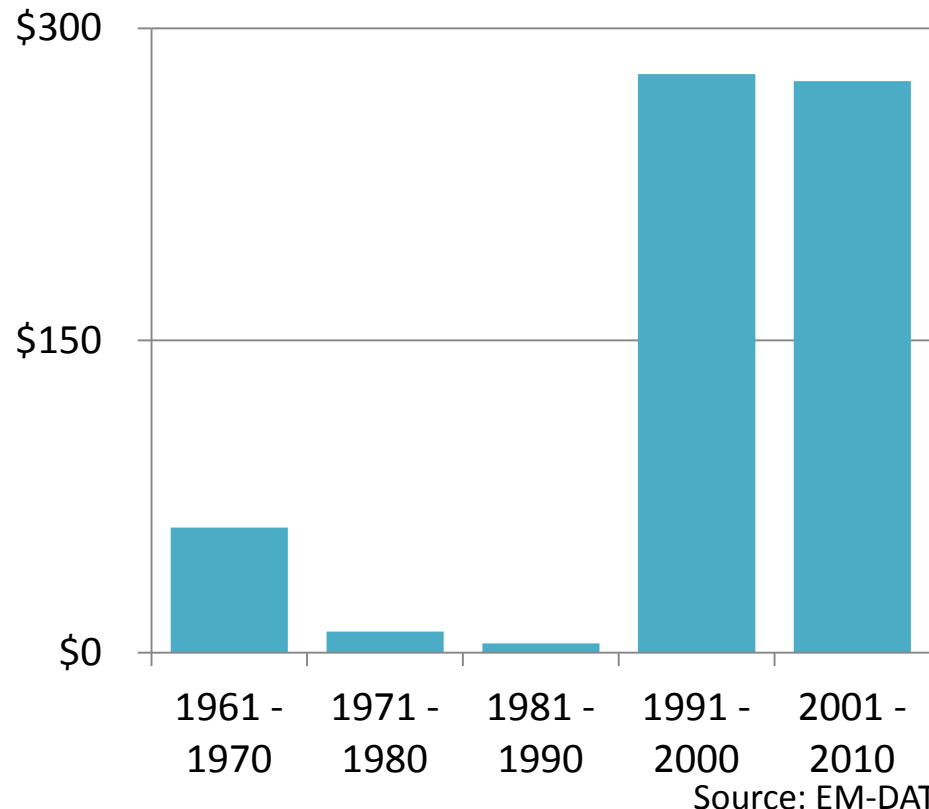


Fiscal consequence of disasters are increasing

Count



Damages (US\$ millions)



Weather related events cause annual economic losses on average of 3.94% of GDP

Source: Germanwatch 2013