

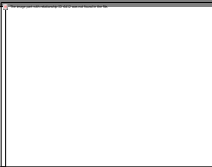


# Nepal's Strategic Program for Climate Resilience

## Maintaining a Programmatic Approach: SPCR Institutional Coordination

12 March 2012

**Meena Khanal**  
**Joint Secretary and PPCR Focal Point**  
**Ministry of Environment**  
**Government of Nepal**



# Outline of Presentation

- Overview of SPCR components and other CC adaptation initiatives
- Institutional arrangements for managing the CC program
- Keys for effective coordination



# SPCR Components

## Component 1

**Building Climate Resilience of Watersheds in Mountain Eco-Regions**

## Component 2

**Building Resilience to Climate-Related Hazards**

## Component 3

**Mainstreaming Climate Change Risk Management in Development**

## Component 4

**Building Climate Resilient Communities through Private Sector Participation**

## Component 5

**Enhancing Climate Resilience of Endangered Species**

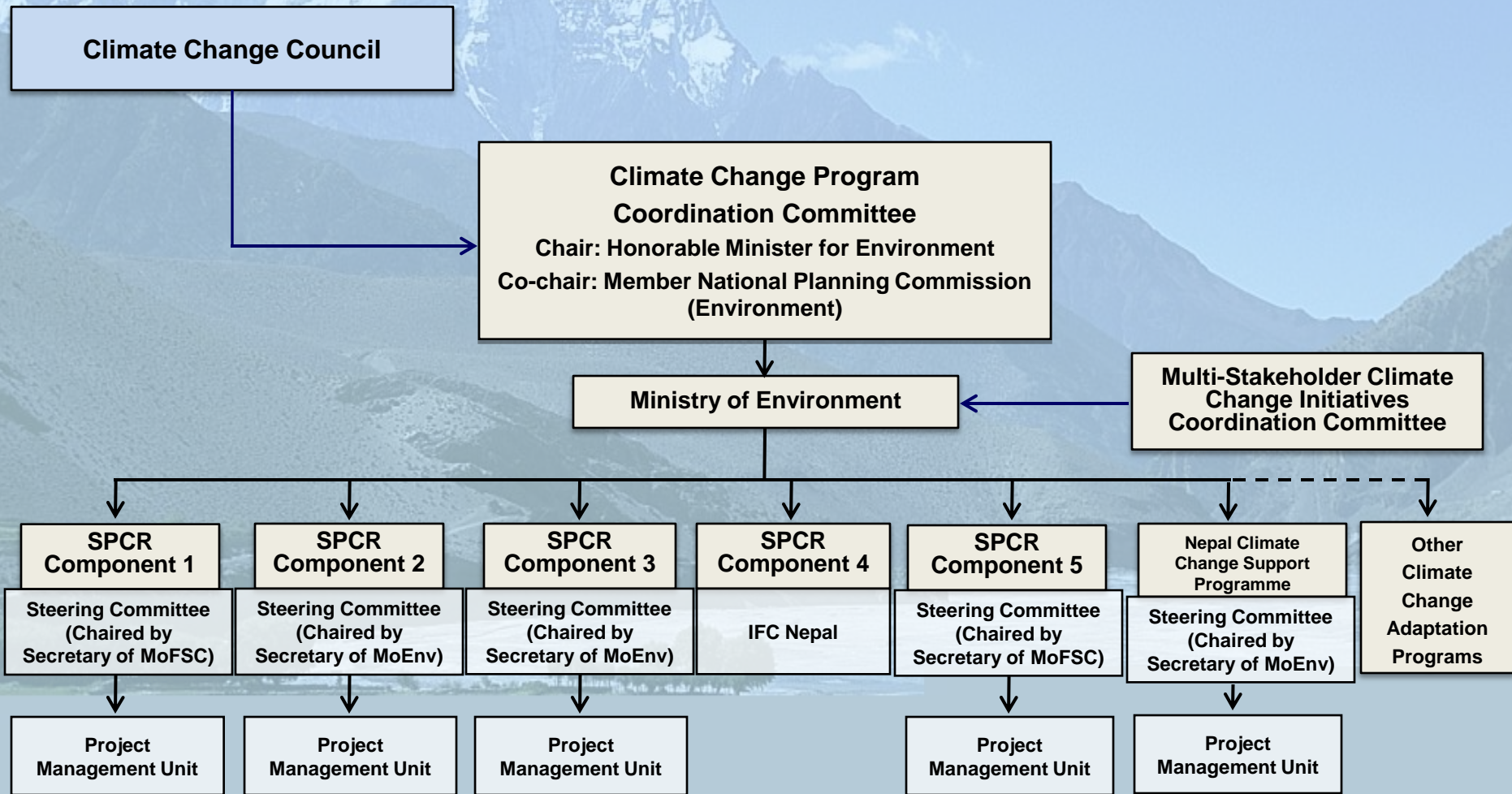


# Other Climate Change Adaptation Program

- **Nepal Climate Change Support Programme**
  - Mainstreaming adaptation into local-level planning
  - Development and implementation of Local Adaptation Programmes of Action (LAPAs) in 14 districts
- **Other Adaptation Programmes (under preparation)**
  - Ecosystems-Based Adaptation Programme
  - Community-Based Flood Risk and Glacial Lake Outburst Flood Risk Reduction Programme
- **Programs with Adaptation Components**
  - For example, Multi-Stakeholder Forestry Programme



# Institutional Setup for Implementation



# Keys for Effective Coordination

- **Common CC Adaptation Results Framework**
  - Enables MoEnv to measure whether and to what extent:
    - people in Nepal are more resilient to climate
    - Nepal's development programs, policies, and projects are safeguarded from the effects of climate change
  - Agencies/development partners involved in leading an SPCR component or other adaptation project/program will help prepare
- **Management Information System**
  - PMUs to implement status
  - MoEnv's tool to monitor across the entire program



# Keys for Effective Coordination (continued)

- **Joint Program Reviews**
  - MoEnv to participate in each of the bi-annual review missions of the SPCR components → assess progress and document lessons
  - MoEnv to lead review of CC program every 2 years → measure performance against the common CC results framework
- **Face-to-Face Dialogue**
  - Quarterly meetings of project directors to discuss key issues affecting their project progress & share implementation experience
- **Public Information and Communication**
  - systematic and proactive approach for communications
  - Information disclosure, websites, media and stakeholder sharing events



# Thank you

