

PPCR Pilot Countries Meeting

COUNTRY COORDINATION: CARIBBEAN REGION

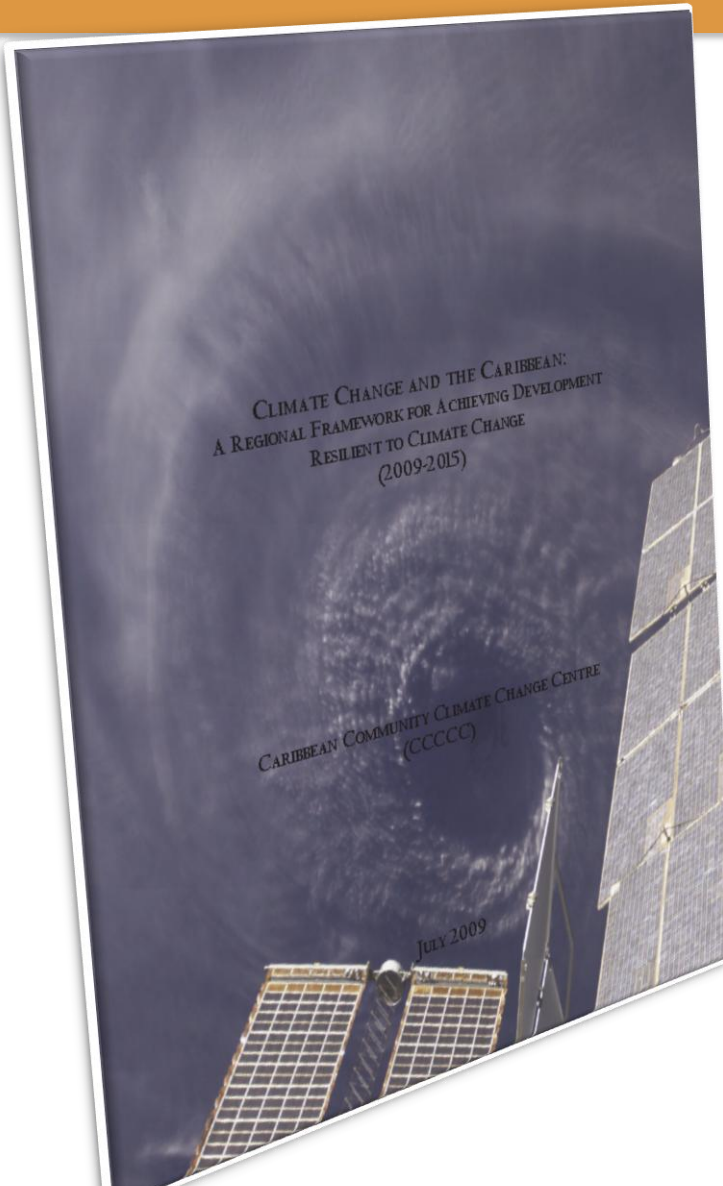
Mark Bynoe

Senior Resource Economist & Head, Programme Development and
Management Unit

Caribbean Community Climate Change Centre

May 2, 2013 – Washington D.C., United States

The Regional Framework for Achieving Development Resilient to Climate Change (1 of 2)



The Regional Framework:

“Establishes and guides the Caribbean’s direction for the continued building of resilience to the impacts of global climate change by CARICOM States”.

Articulates the strategic direction for the region’s response to climate change risks.

Approved by the CARICOM Heads of Government at their meeting in Georgetown, Guyana in July 2009

The Regional Framework for Achieving Development Resilient to Climate Change (2 of 2)



Mainstreaming Climate Change into the **SUSTAINABLE DEVELOPMENT AGENDA** and work programmes of public and private institutions in all Caribbean Community countries at all levels



Promoting systems and actions to **REDUCE THE VULNERABILITY** of Caribbean Community countries to global Climate Change wherever possible



Promoting measures to **DERIVE BENEFIT FROM THE PRUDENT MANAGEMENT** of forests, wetlands, and the natural environment, in general, and to protect that natural environment



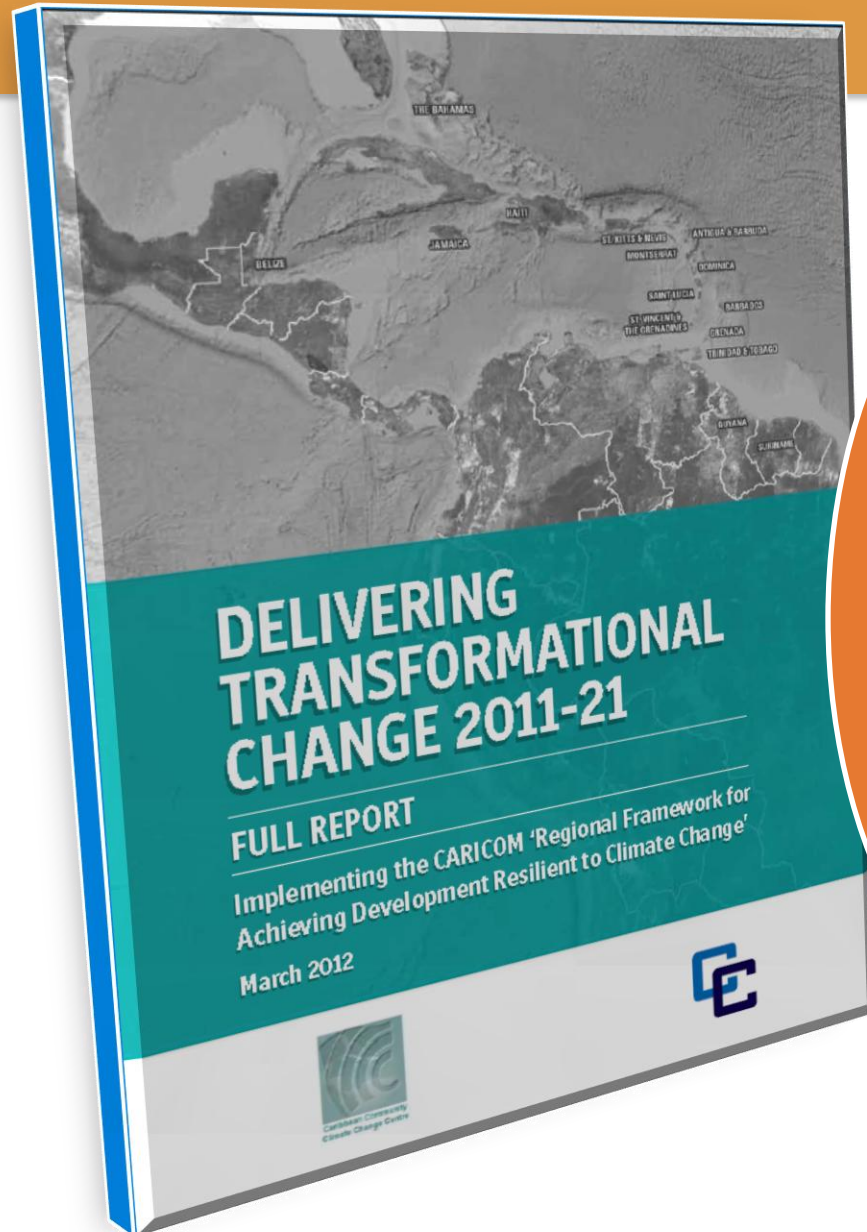
Promoting actions and arrangements to **REDUCE GREENHOUSE GAS EMISSIONS**, including those aimed at energy-use efficiency by increasingly resorting to low-emission renewable energy sources



Promote implementation of **SPECIFIC ADAPTATION MEASURES** to address key vulnerabilities in the Region.



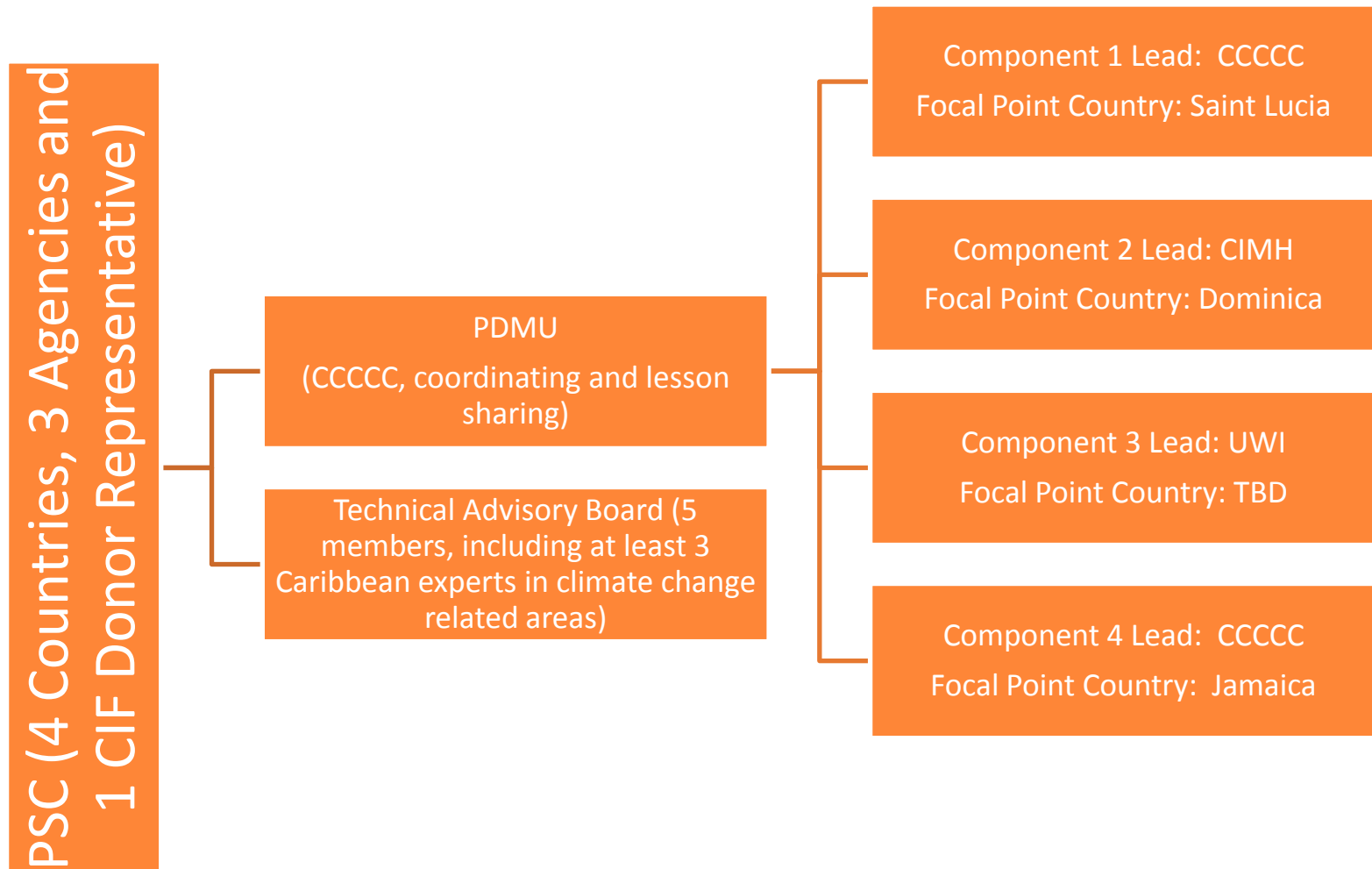
The Implementation Plan for the Regional Framework



seeks to guide the identification and prioritisation of actions by regional and national stakeholders through the use of **risk management approaches to decision-making**.

acknowledges that a **transformational change** in mind set, institutional arrangements, operating systems, collaborative approaches and integrated planning mechanisms are essential to deliver the strategic elements and goals of the Regional Framework.

The SPCR Implementation Structure and the Three-Ones Principle



CARICOM Climate Change Centre

CARICOM Specialised Institution responsible for coordinating the CARICOM Region's response to climate change and its efforts to manage its projected impacts.

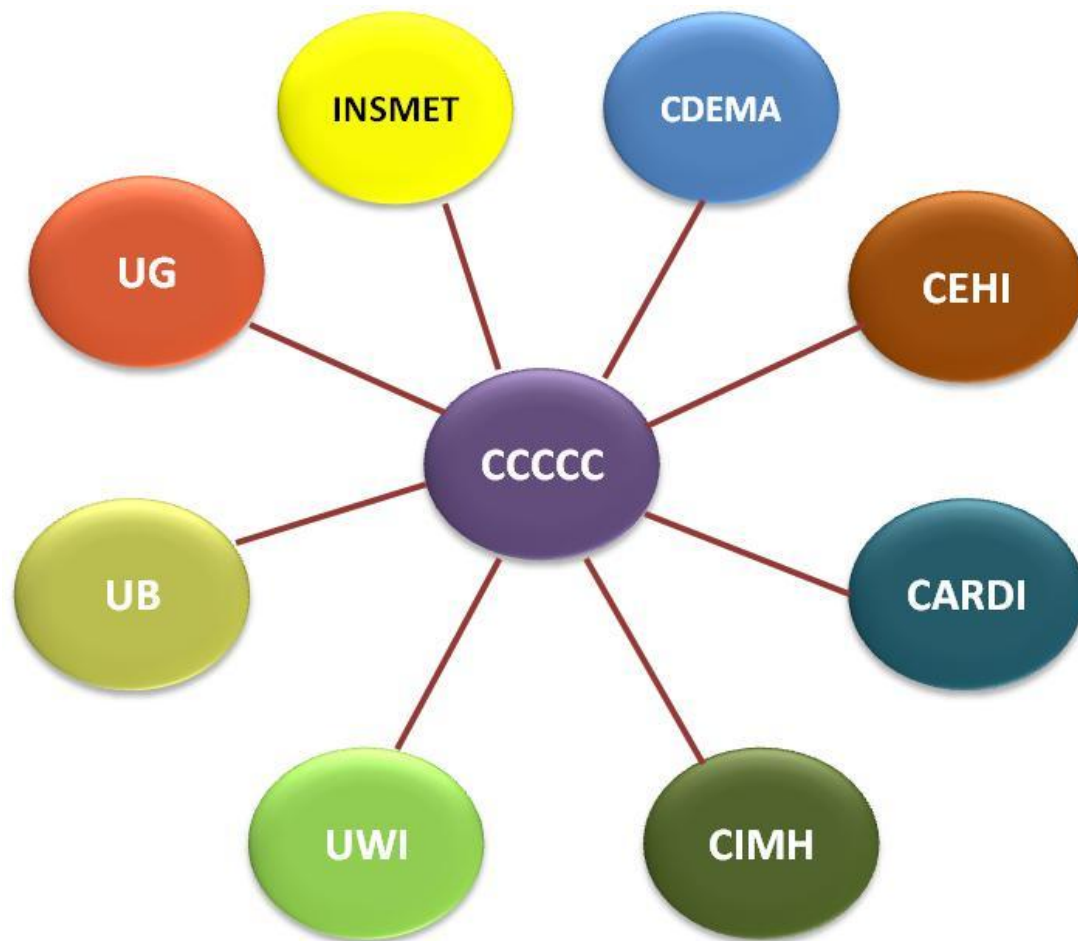
CCCCC's Role Under the PPCR:

- Support and lead on the substantive technical area—mainly climate change resilience and adaptation (Lead – Component 4).
- Technical inputs on information management aspects of the proposed SPCR (Lead - Component 1), as well as for support to the project information and communication management.
- Support for procurement and financial transactions and strategic administrative inputs.

Lead Regional Organizations

- **Consolidating and Expanding the Regional Climate Monitoring Network and Global Platform Linkages - Lead**
- Agencies are Caribbean Institute of Meteorology and Hydrology (CIMH)/Caribbean Meteorological Organization (CMO)
- **Downscaling and Expanding Climate Projection Models and High Resolution Maps - Lead - University of the West Indies (UWI)**
- **Implementing Entities Under Component 4** will include:
 - Caribbean Regional Fisheries Mechanism (CRFM),
 - Caribbean Agricultural and Research Development Institute (CARDI), and
 - Caribbean Epidemiological and Health Institute (CEHI).

Operational Examples of Interaction



Operational Examples of Interaction

- Hosting of the Second Joint Mission that aided in the Finalization of the SPCR and will assist with the design of the IP.
- Held consultative session amongst all of the SPCR stakeholders on October 8-9, 2012 to identify linkages and synergies (regional components and national and regional components) and ensure that the required actions toward these are articulated and resourced.
- Continuous dialogue with PPCR countries to better align their programmes with the Region Track and other initiatives occurring within the Region, i.e., DMS Project, WKU, EU-GCCA, DFID Aries, CDKN CCRMF, CARIWIG, etc.
- An institutional assessment was undertaken to allow for better articulation of common methodologies, financial protocols and resource allocation to the respective Regional Entities
- Hosting of a Data Management meeting with CIMH on March 23-24, 2013 to allow for better understanding of their vision for the Region.

Learning from Experience

Challenges

- This is a complex undertaking and hence we need to see the forests and not only the trees!
- The number of agencies and countries directly involved in the implementation of the SPCR, coupled with the required link to the national programs, makes coordination particularly challenging
- There remains significant capacity constraints regionally
- Dealing with countries at different levels of programme implementation

Lessons Learned

- Maintaining continuous dialogue with stakeholders is essential
- Ensuring that an MoU is signed with the major players detailing roles and responsibilities and insulating against changes in personnel
- All adaptation is local and it is imperative to think regionally while delivering nationally – LISTEN! LISTEN! LISTEN!
- Having joint consultative meetings is essential for cross-fertilisation and greater synergies.
- Have a thick skin !!!

Thank You

Let's Connect!

Caribbean Community Climate Change Centre

Lawrence Nicholas Building, Ring Road, P.O. Box 563

Belmopan, Belize

Email: mbynoe@caribbeanclimate.bz

Tel: +(501) 822-1104/1094; Fax: +(501) 822-1365

