

# Toolkit for Monitoring & Reporting on the Pilot Program for Climate Resilience (PPCR)

Christine Roehrer

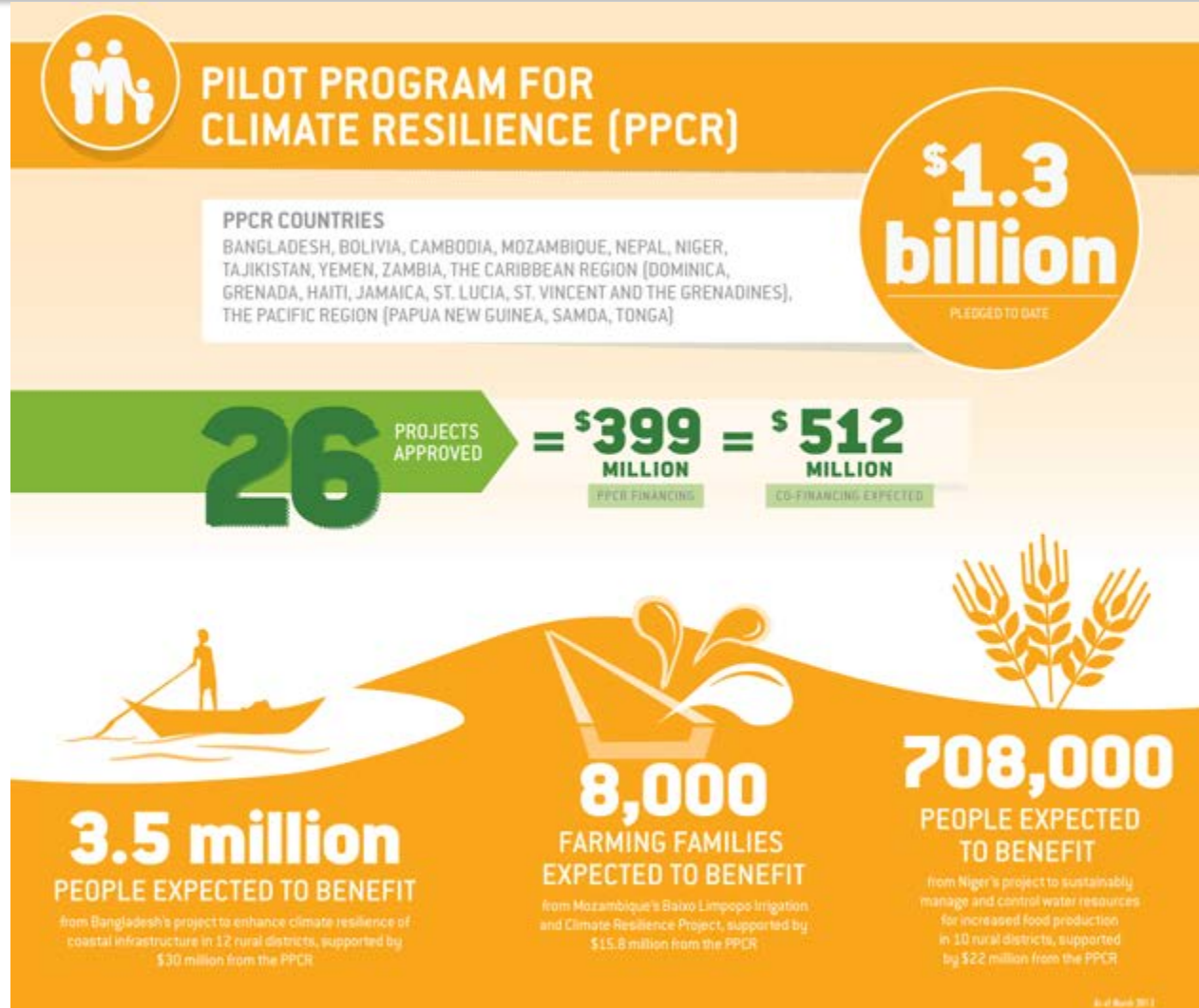
CIF Administrative Unit

May 2, 2013 – Washington D.C., United States

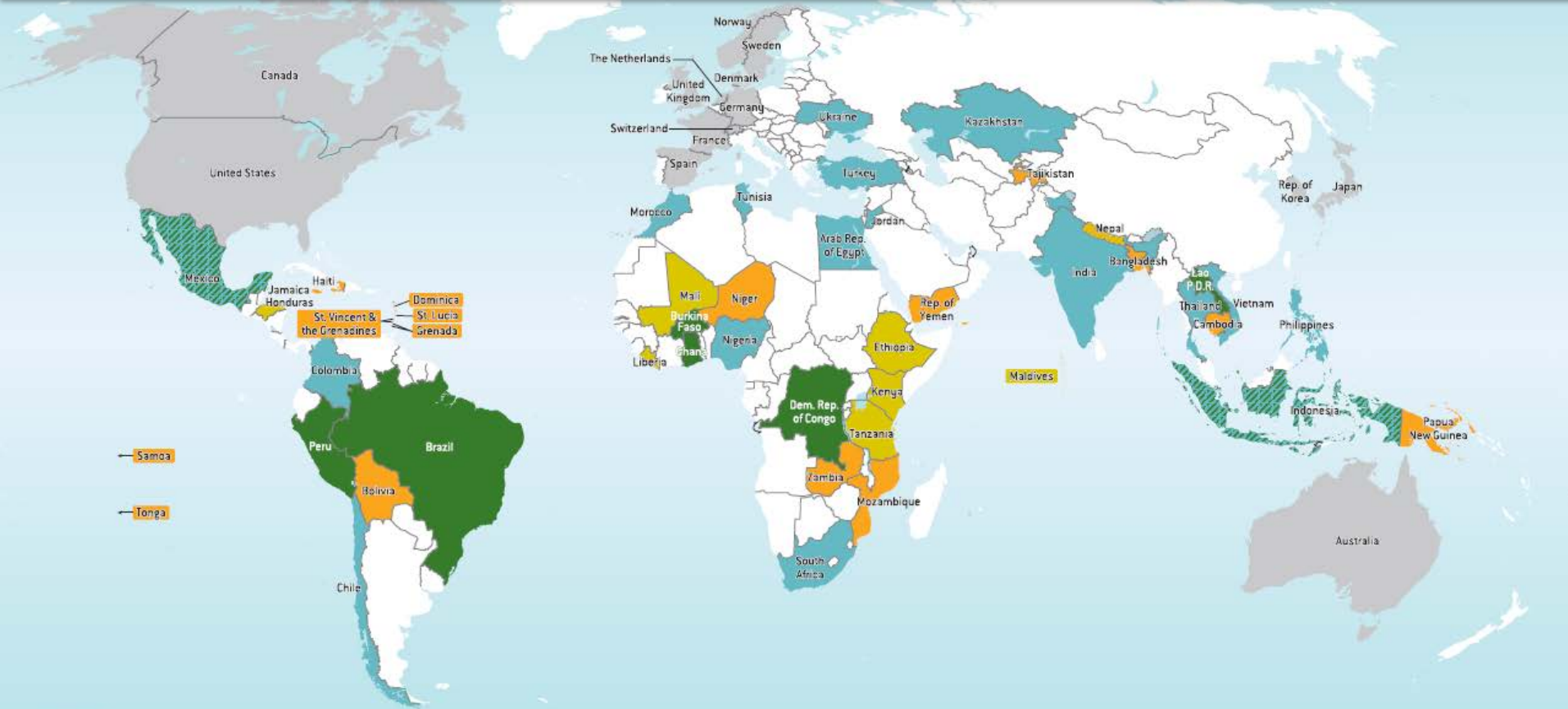
# Pilot Program for Climate Resilience

**Objective**  
Mainstream  
climate resilience  
into core  
development  
planning and action

**Funding**  
For Technical  
Assistance and  
Investments to  
support countries'  
efforts



# CIJ in Action



© 2013 World Bank Group  
 This map was prepared for the Map Design Unit of the World Bank.  
 The boundaries, colors, denominations and any other information  
 shown on this map do not imply on the part of the World Bank  
 Group any judgment on the legal status of any territory, or any

■ CLEAN TECHNOLOGY FUND (CTF)
 ■ PILOT PROGRAM FOR CLIMATE RESILIENCE (PPCR)
 ■ FOREST INVESTMENT PROGRAM (FIP)
 ■ PROGRAM FOR SCALING UP RENEWABLE ENERGY IN LOW INCOME COUNTRIES (SREI)
 ■ CIF CONTRIBUTOR COUNTRIES



**PPCR:**

**18 country and 2 regional programs**

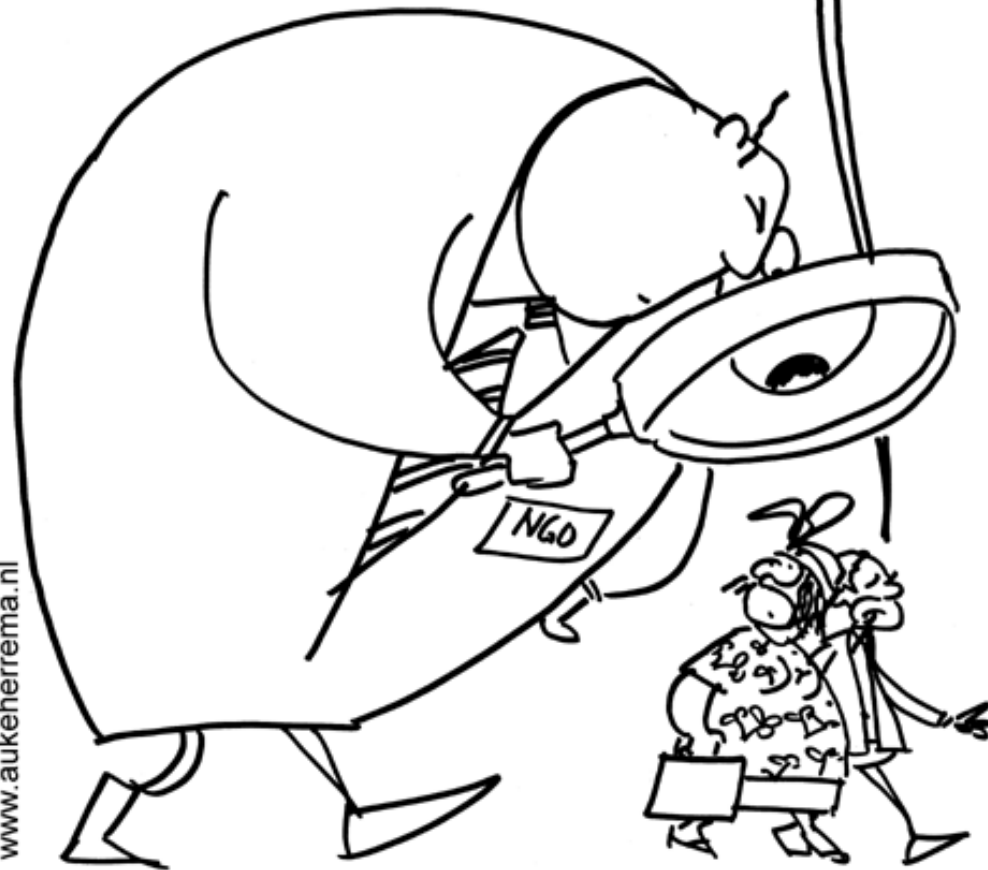


*Why on earth M&E?*

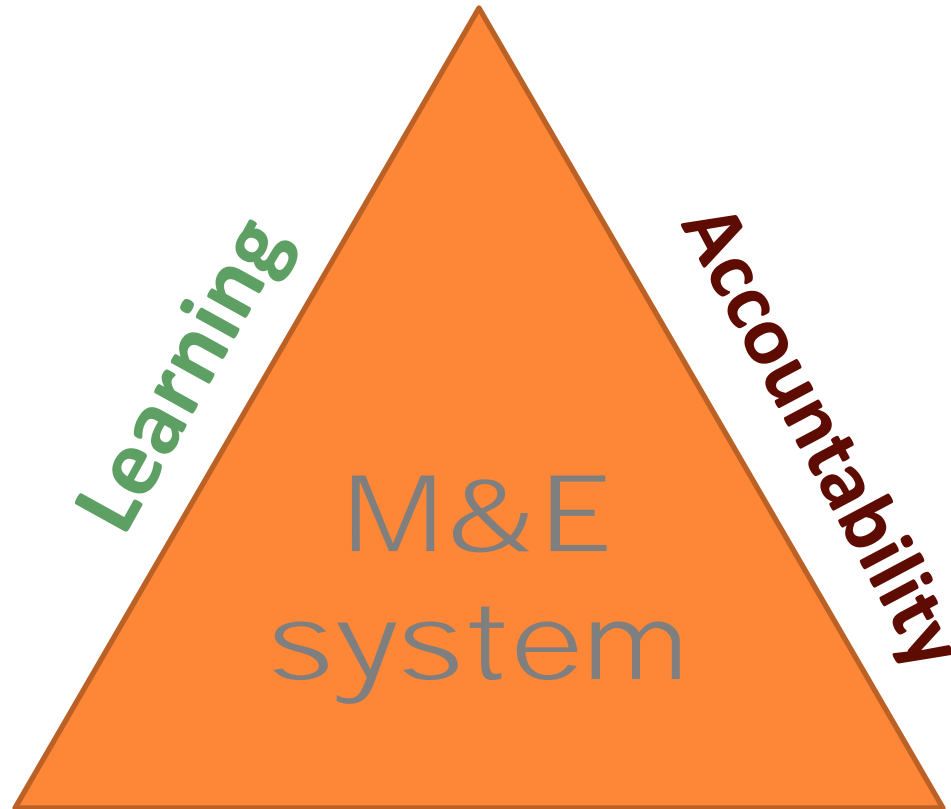
*Couldn't we better do without?*

MONITORING & EVALUATION

HE IS MONITORING  
IT'S THE LATEST FASHION



# Why on earth M&E?



**Evidence – based  
decision making**

*Couldn't we better do without?*

# Couldn't we better do without?

© MARK ANDERSON

WWW.ANDERTOONS.COM



"We're still not sure what happened here, but I think we can all agree that we're glad it's over."



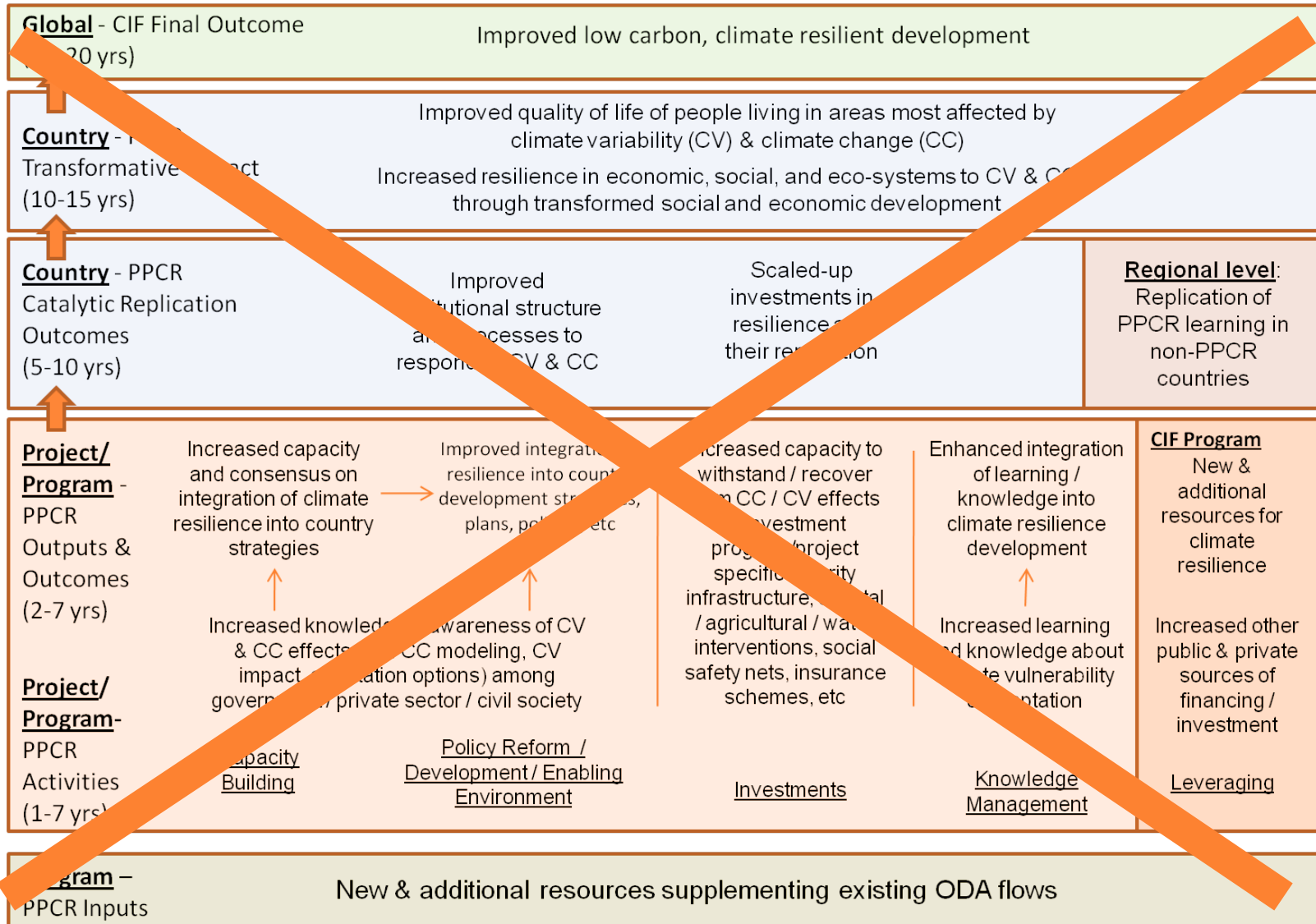


# PPCR Monitoring & Reporting: PAST, PRESENT & FUTURE

**Results Framework → Monitoring & Reporting**

# 2010 Results Framework (old):

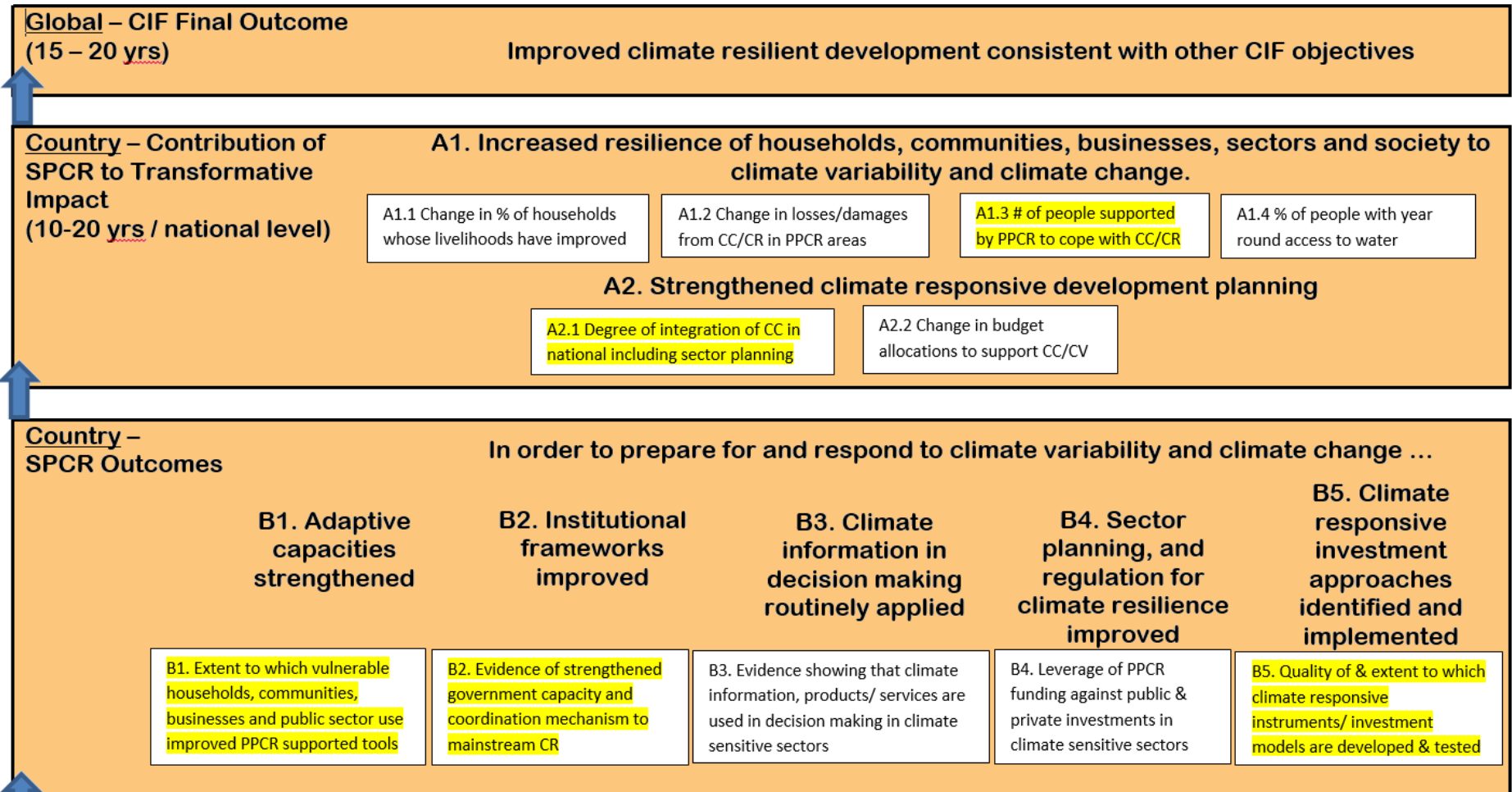
22 indicators, including project level



# 2012 Results Framework (new):

## 5 core indicators (yellow), 6 optional

### PPCR Revised logic model and results framework



*What is a core indicator ?*

# A concrete example ...



**"I think it's getting serious between George and me.  
He doesn't text me anymore. He calls me on the phone."**

*Adaptation is such a complex subject*

*How shall we measure resilience?*

*3 of the 5 core indicators are qualitative,  
how can we measure consistently?*



# 5 Core Indicators:

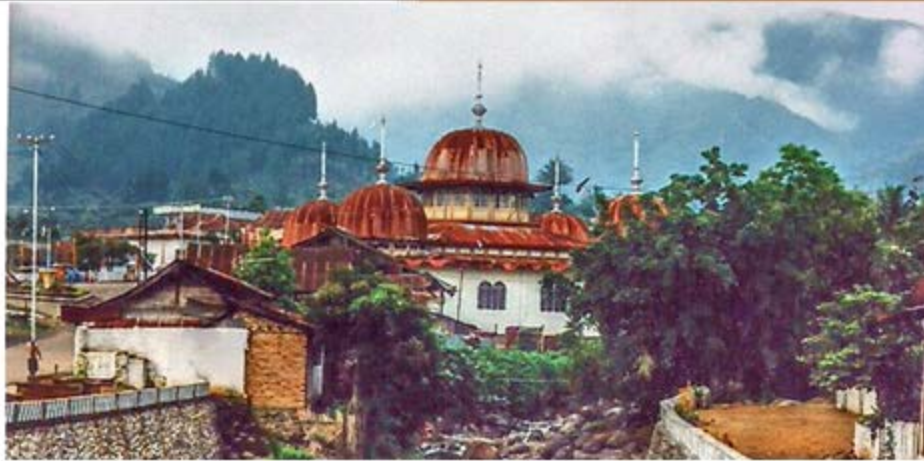
Each w/ guidance and tool for monitoring/reporting

- 1 **Degree of Integration of climate change in national, including sector, planning**
- 2 **Evidence of strengthened government capacity and coordination mechanism to mainstream climate resilience**
- 3 **Quality and extent to which climate responsive instruments/ investment models are developed and tested**
- 4 **Extent to which vulnerable households, communities, businesses and public sector services use improved PPCR supported tools, instruments, strategies and activities to respond to climate variability or climate change**
- 5 **Number of people supported by the PPCR to cope with the effects of climate change**

# PPCR Toolkit



## PPCR Monitoring and Reporting Toolkit



# Core Indicator Guidance Sheet

<b>PPCR CORE INDICATOR 1</b>	<b>Degree of integration of climate change in national, including sector, planning</b>
<b>SPCR IMPACT</b>	Strengthened climate responsive development planning
<b>RATIONALE / REASONS FOR MEASURING</b>	<p>This indicator is designed to capture the extent to which considerations of climate resilience (risks, opportunities) are integrated into planning processes in national and sectoral levels. It is relevant to interventions intended to build the capacity of countries to address climate resilience through the development of climate plans, strategies and mainstreaming mechanisms and systems.</p> <p>The achievement of this indicator cannot be attributed to the PPCR alone. This indicator provides reference data about the strength of a country's climate-responsive development planning.</p>
<b>TECHNICAL DEFINITION</b>	<p>In this indicator, degree refers to the depth of the process of integration of climate resilience within national, ministry and sector planning.</p> <p>Integration refers to the embedding of climate resilience priorities into new and existing development planning.</p> <p>National, including sector planning refers to the processes for developing strategies, policies, plans, laws, regulations and institutional arrangements to promote and integrate climate resilience.</p>
<b>METHODOLOGY</b>	<p>This indicator is a qualitative assessment of the various strategies, policies, plans and documents to observe changes in terms of the integration of climate change priorities into national, including sector planning.</p> <p>The qualitative assessment will focus on the following criteria:</p> <ol style="list-style-type: none"> <li>1. Existence of a specific climate change policy, plan</li> <li>2. Climate resilience strategies embedded in the principal planning documents at various levels (national, sector, ministry);</li> <li>3. Responsibility assigned to coordinate the integration of climate resilience into planning;</li> <li>4. Specific measures to address climate resilience identified and prioritized e.g. laws, regulations and incentives in these policies and plans;</li> <li>5. Routine screening for climate risk in planning processes.</li> </ol> <p>These criteria are regarded as complementary, but not strictly sequential.</p> <p>Measurement will be at the level of the SPCR and by way of the qualitative PPCR Monitoring and Reporting Scorecard 1.</p>

Other sections:

- Data sources and data collection
- Responsibilities for Monitoring and Reporting
- Quality Assurance

# Examples of Scorecards and Tables

# Monitoring and Reporting Scorecard for PPCR Core Indicator 1

Date of Report: mm/dd/yy

## PPCR Core Indicator 1: Degree of integration of climate change into national planning

Data Collection Method: Data scored at the country level

### Strategic Plan for Climate Resilience (SPCR) Strategic Plan for Climate Resilience (SPCR)

Reporting Period:

From: July 1, 2012

To: June 30, 2013

Complete below the sectors identified as a priority in the SPCR. Insert other priority sectors or ministries below(optional)	Is there an approved climate change plan for the nation/ sector?	Have climate resilience strategies been embedded in the central government's/ sector's principal planning documents?	Has responsibility been assigned to institutions or persons to integrate climate resilience planning?	Have specific measures to address climate resilience been identified and prioritized? e.g. investments and programs	Do all planning processes routinely screen for climate risks?	Score
a	b	c	d	e	f	g
<b>National Planning</b>						0%
Sector 1						0%
Sector 2						0%
Sector 3						0%
Sector 4						0%
						0%
						0%
						0%

Score each cell with a score between 0 and 10 where 0 = No, 5 = Halfway and 10 = Yes completely

**Achievements:** Write comments, highlights and/or relevant achievements of the PPCR project in the reporting period. These should help to explain your score.

- 1.
- 2.
- 3.
- 4.
- 5.

# Monitoring and Reporting Scorecard for PPCR Core Indicator 2

Date of Report: mm/dd/yy

## PPCR Core Indicator 2: Evidence of strengthened government capacity and coordination mechanism to mainstream climate resilience

**Data Collection Method:** Data scored at the country level

### Sample Strategic Plan for Climate Resilience (SPCR)

**Reporting Period:** From: **July 1, 2012** To: **June 30, 2013**

<b>Government Capacity</b> Complete below the sectors identified as a priority in the SPCR. Insert other priority sectors or ministries below (optional)	Are information, studies and assessments addressing climate change, variability and resilience available?	Is the necessary climate change expertise available?	Do national/sector incentives and legislative policies expressly address climate change and resilience?	Does the government/sector participate in the coordination mechanism?	Score
	a	b	c	d	e
<b>Sample Government</b>					0%
Sector 1					0%
Sector 2					0%
Sector 3					0%
Sector 4					0%
					0%

Score each cell with a score between 0 and 10 where 0 = No, 5 = Halfway and 10 = Yes complete

<b>Coordination Mechanism</b> Name the Coordination Mechanism below	Is the coordination mechanism functional e.g., established, effective and efficient?	Does it coordinate climate resilience interventions other than those funded by PPCR.	Is there a broad set of non-governmental stakeholders involved?	Is the relevant climate resilience information in the public domain?	Are females and males participating equally?	Score
						0%

Score each cell with a score between 0 and 10 where 0 = No, 5 = Halfway and 10 = Yes completely

**Achievements:** Write comments, highlights and/or relevant achievements in the reporting period. These should help to explain your score.

- 1.
- 2.

# Monitoring and Reporting Scorecard for PPCR Core Indicator 3

Date of Report: mm/dd/yy

## PPCR Core Indicator 3: Quality of and extent to which climate responsive instruments/investment models are developed and tested

Data Collection Method: Scored at the project-level and compiled at the SPCR level

Sample Strategic Plan for Climate Resilience (SPCR)

Country Aggregate Report

Reporting Period:

From: July 1, 2012

To: June 30, 2013

Climate responsive instrument/ investment models identified:	Has the instrument/ investment model been developed and tested?	Has the instrument/ investment model been implemented to the scale proposed?	Has the instrument/ investment model appropriately incorporated the needs of both females and males into its design and implementation?	Has the instrument/ investment model incorporated the needs of vulnerable populations into its design and implementation?	
a	b	c	d	e	f
1					
2					
3					
4					
5					
6					
7					
8					
9					
+					

Score each cell with a score between 0 and 10 where 0 = No, 5 = Halfway and 10 = Yes completely

**Comment on Impact:** Have any of the above instruments/investment models been further tested/developed by other non-PPCR stakeholders? If so, identify which ones and briefly describe how they have been tested/developed.

- 1.
- 2.
- 3.
- 4.
- 5.

# Monitoring and Reporting Table for PPCR Core Indicator 4

Date of Report: mm/dd/yy

**PPCR Core Indicator 4: Extent to which vulnerable households, communities, businesses and public sector services use improved PPCR supported tools, instruments, strategies, activities to respond to Climate Variability and Climate Change**

**Data Collection Method:** Data collected for each project and compiled at the SPCR level

**Sample Strategic Plan for Climate Resilience (SPCR)**

**Country Aggregate Report**

**Reporting Period:** From: July 1, 2012 To: June 30, 2013

Only complete for the categories targeted by the tool, instrument, strategy, or activity

Identify the improved PPCR supported tool, instrument, strategy, activity below.  These are the same as those identified in Scorecard 3	Number of Households		Write up to three sentences describing how households use this?	Number of Communities		Write up to three sentences describing how communities use this?	Number of Businesses		Write up to three sentences describing how businesses use this?	Number of Public Sector Service Entities		Write up to three sentences describing how public sector service entities use this?	
	Annual Actual	Expected Results*		Annual Actual	Expected Results*		Annual Actual	Expected Results*		Annual Actual	Expected Results*		
	a	b	c	d	e	f	g	h	i	j	k	l	m
1													
2													
3													
4													
5													
6													
7													
8													
9													
10													
+													

\* Expected Results at SPCR completion date

**Commentary:** Have non-targeted users used these tools? Please use the space below to tell us about them. These are also your successes.

- 1.
- 2.
- 3.
- 4.
- 5.



## Monitoring and Reporting Table for PPCR Core Indicator 5

Date of Report: mm/dd/yy

PPCR Core Indicator 5: Number of people supported by the PPCR to cope with the effects of climate change												
<b>Data Collection Method:</b> Data collected for each project and compiled at the SPCR level												
Sample Strategic Plan for Climate Resilience (SPCR)												
Country Aggregate Report												
Reporting Period From: July 1, 2012 To: June 30, 2013												
	Direct				Indirect				Total			
	Annual Actual	Annual Expected Result	Cumulative Actual	SPCR Expected Results*	Annual Actual	Annual Expected Result	Cumulative Actual	SPCR Expected Results*	Annual Actual	Annual Expected Result	Cumulative Actual	SPCR Expected Results*
a	b	c	d	e	f	g	h	i	j	k	l	m
Total number supported by the PPCR to cope with the effects of climate change									0	0	0	0
Number of people below the national poverty line supported by the PPCR to cope with the effects of climate change									0	0	0	0
Females supported by the PPCR to cope with the effects of climate change									0	0	0	0

\* SPCR Expected Results at SPCR completion date

**Achievements:** Use the space below to write comments, highlights and/or relevant achievements of the PPCR project in the reporting period.

- 1.
- 2.
- 3.
- 4.
- 5.

*Scorecards: Scoring brings a quantitative element to qualitative information*

*Participation*





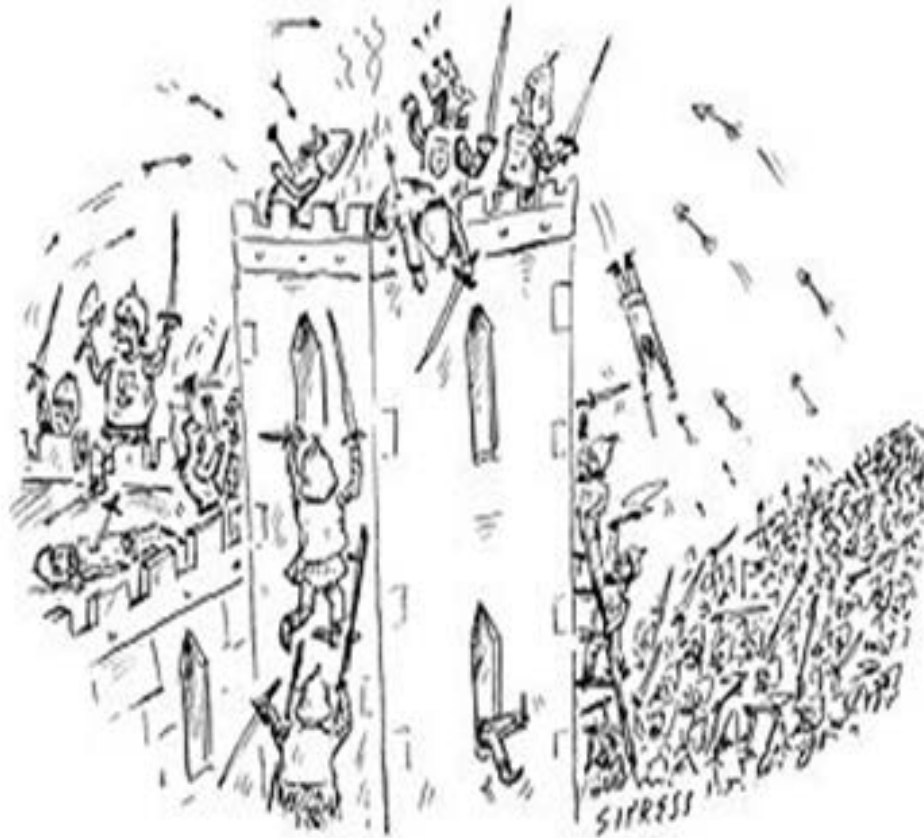






# Importance of a Work Plan for Monitoring and Reporting

© david sípress Cartoonbank.com



**“What do you mean, ‘we never got around to developing a work plan?’”**

# Questions & Answers

?

?

?

?

THANK YOU

**Christine Roehrer**

Sr. Monitoring and Evaluation Specialist

Climate Investment Funds

Administrative Unit

[croehrer@worldbank.org](mailto:croehrer@worldbank.org)